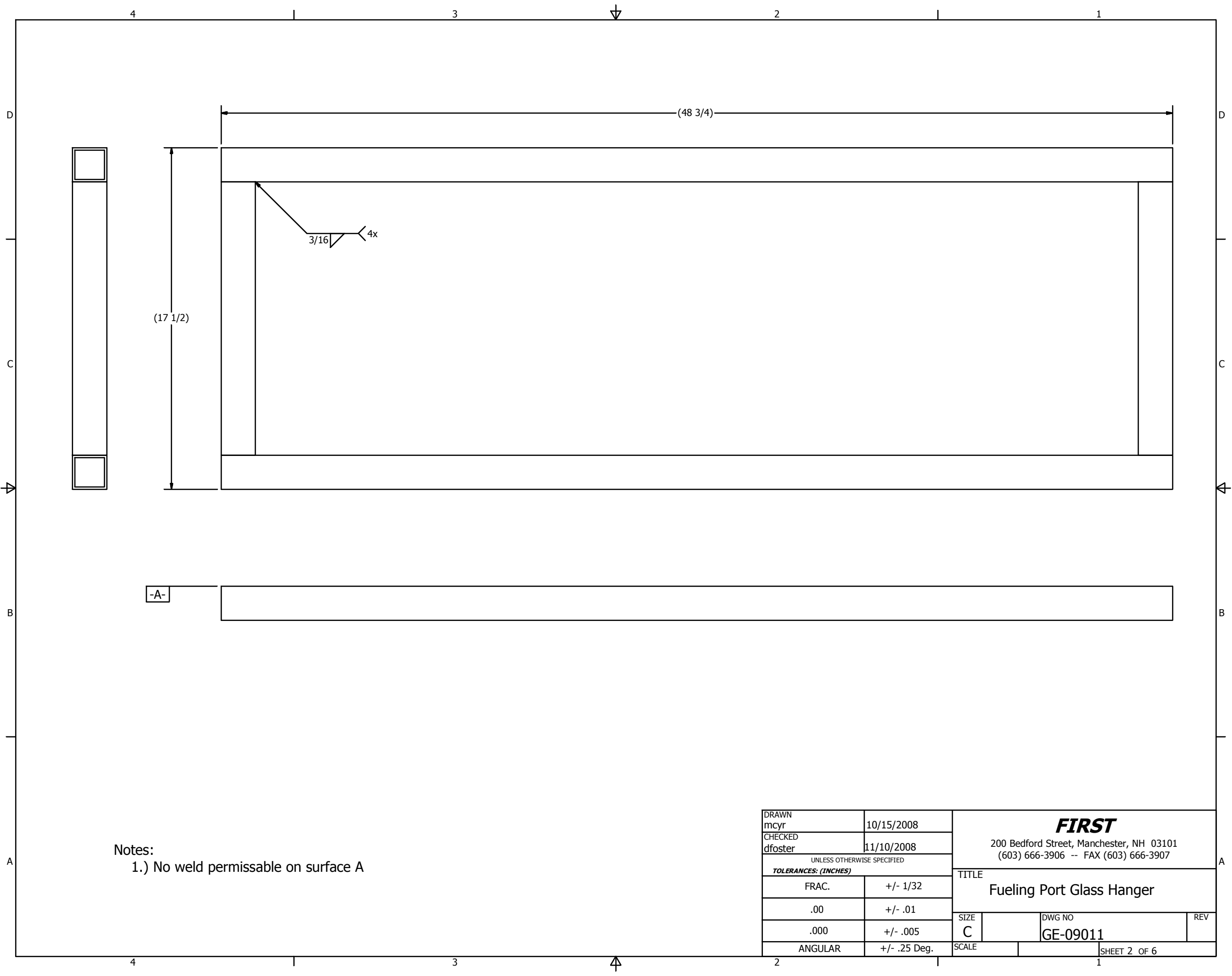


Resources		
Resource	Material	Quantity
1	6061 Aluminum Square tube 1-3/4" x 1/8" wall thickness	11 ft
2	6061 Aluminum C-Channel 3/4" x 1/8" wall thickness	7 ft
3	Aluminum bar1-1/2" x 1/4" thick	9 in

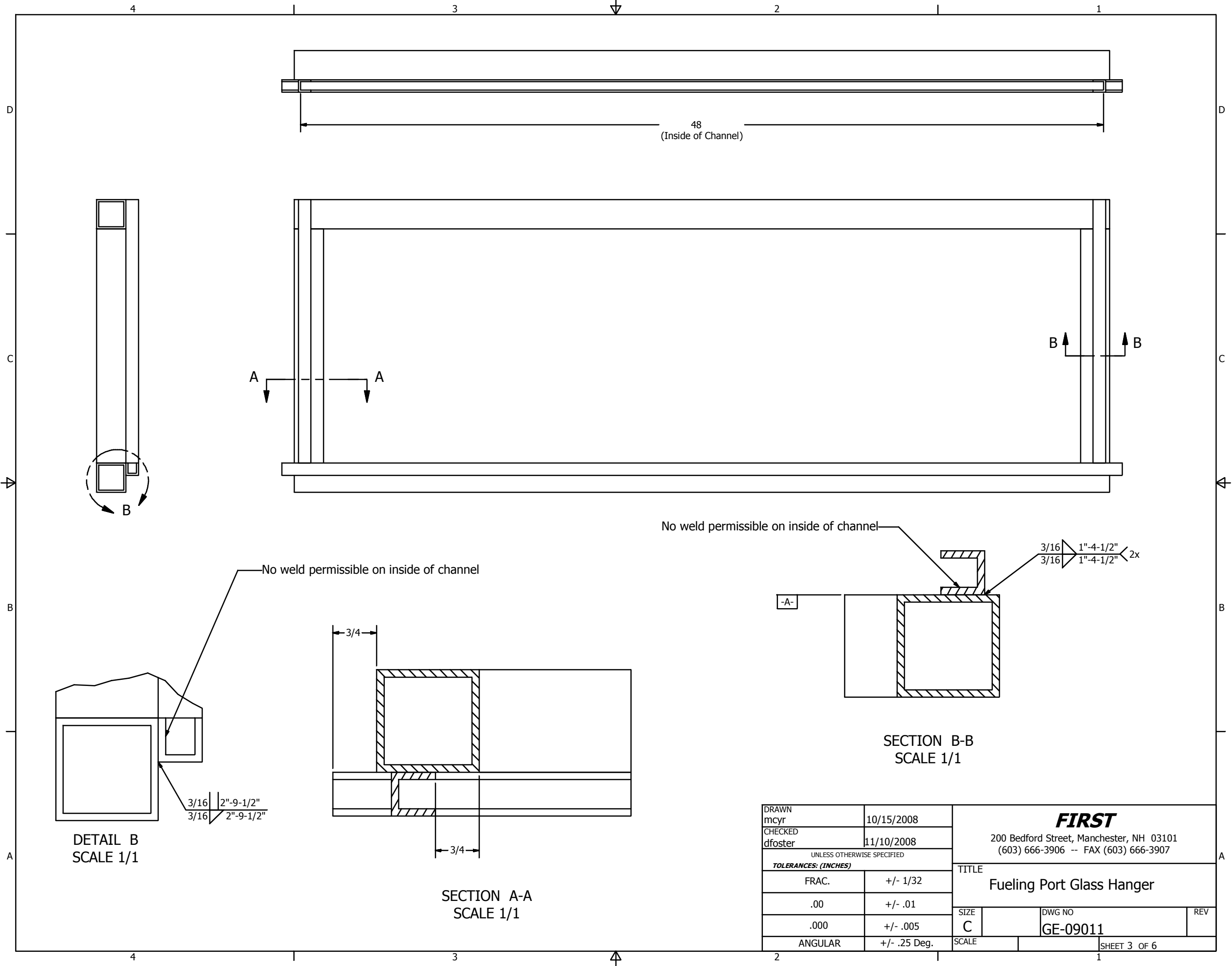
Parts List			
ITEM	QTY	PART NUMBER	DESCRIPTION
1	2	GE-09011-01	Frame top and bottom
2	2	GE-09011-02	Frame sides
3	2	GE-09011-03	Channel sides
4	1	GE-09011-04	Channel Bottom
5	2	GE-09011-05	Rear Bracket

DRAWN mcyr		10/15/2008		<div>FIRST</div> <div>200 Bedford Street, Manchester, NH 03101 (603) 666-3906 -- FAX (603) 666-3907</div>			
CHECKED dfoster		11/10/2008					
UNLESS OTHERWISE SPECIFIED TOLERANCES: (INCHES)				<div>TITLE</div> <div>Fueling Port Glass Hanger</div> <div><div>SIZE C</div><div>DWG NO GE-09011</div><div>REV</div></div>			
FRAC.		+/- 1/32					
.00		+/- .01					
.000		+/- .005					
ANGULAR		+/- .25 Deg.					
				SCALE		SHEET 1 OF 6	

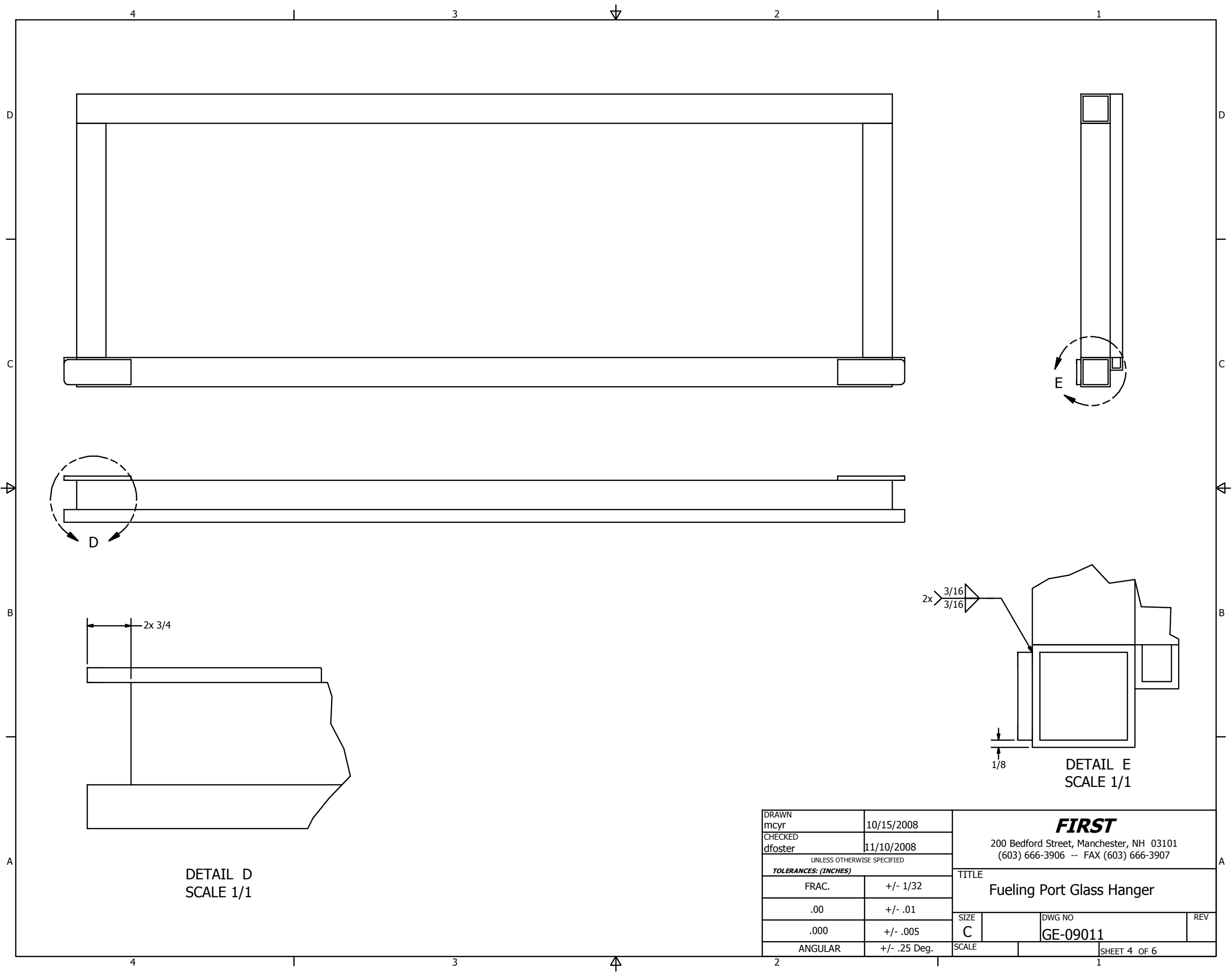


Notes:
1.) No weld permissable on surface A

DRAWN mcyr		10/15/2008		<div><div>FIRST</div><div>200 Bedford Street, Manchester, NH 03101 (603) 666-3906 -- FAX (603) 666-3907</div></div>			
CHECKED dfoster		11/10/2008					
UNLESS OTHERWISE SPECIFIED TOLERANCES: (INCHES)				TITLE Fueling Port Glass Hanger			
FRAC.		+/- 1/32					
.00		+/- .01					
.000		+/- .005					
ANGULAR		+/- .25 Deg.		SIZE C	DWG NO GE-09011		REV
				SCALE		SHEET 2 OF 6	



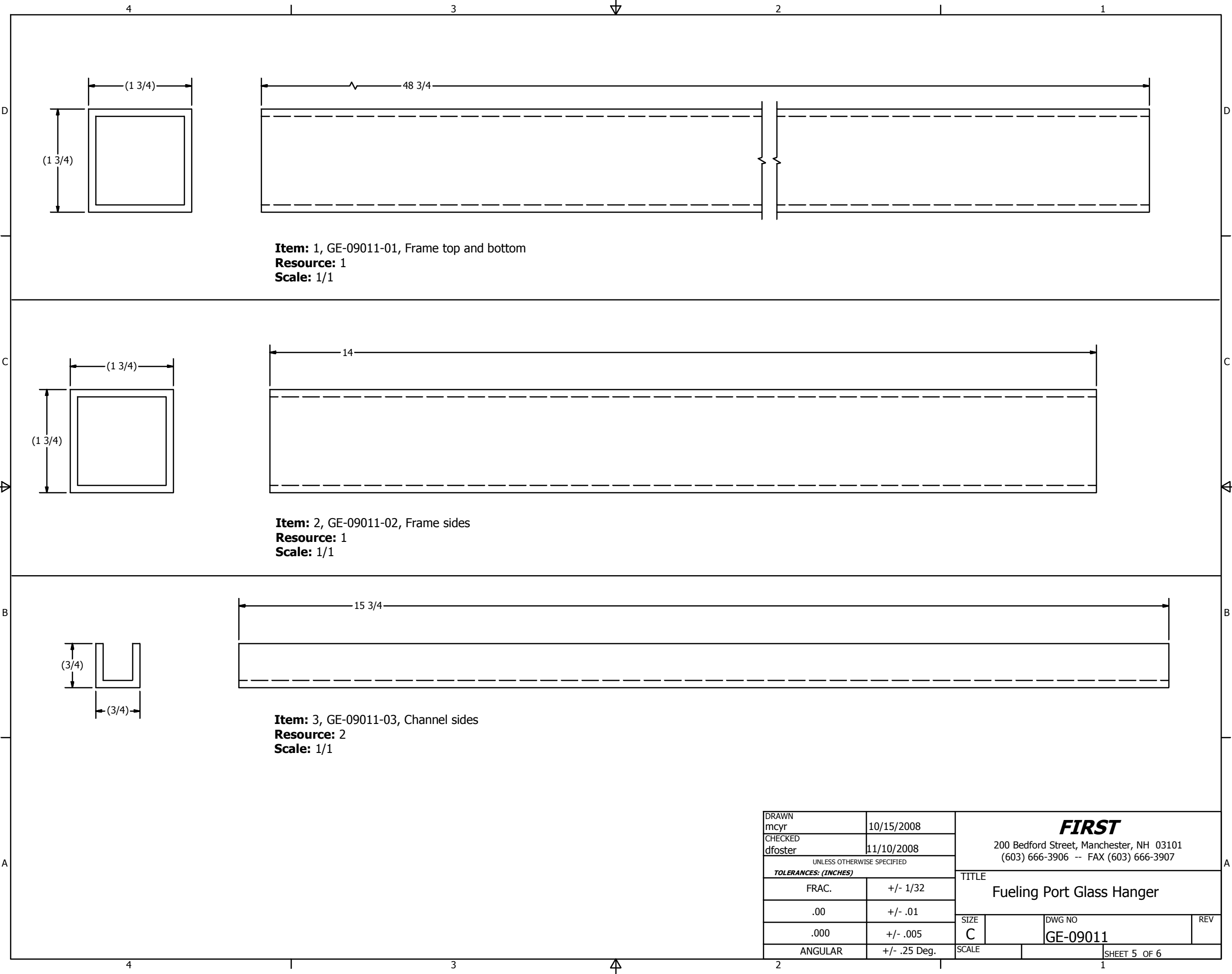
DRAWN mcyr	10/15/2008	FIRST 200 Bedford Street, Manchester, NH 03101 (603) 666-3906 -- FAX (603) 666-3907		
CHECKED dfoster	11/10/2008			
UNLESS OTHERWISE SPECIFIED TOLERANCES: (INCHES)		TITLE Fueling Port Glass Hanger		
FRAC.	+/- 1/32	SIZE C	DWG NO GE-09011	REV
.00	+/- .01	SCALE		
.000	+/- .005	SHEET 3 OF 6		
ANGULAR	+/- .25 Deg.			

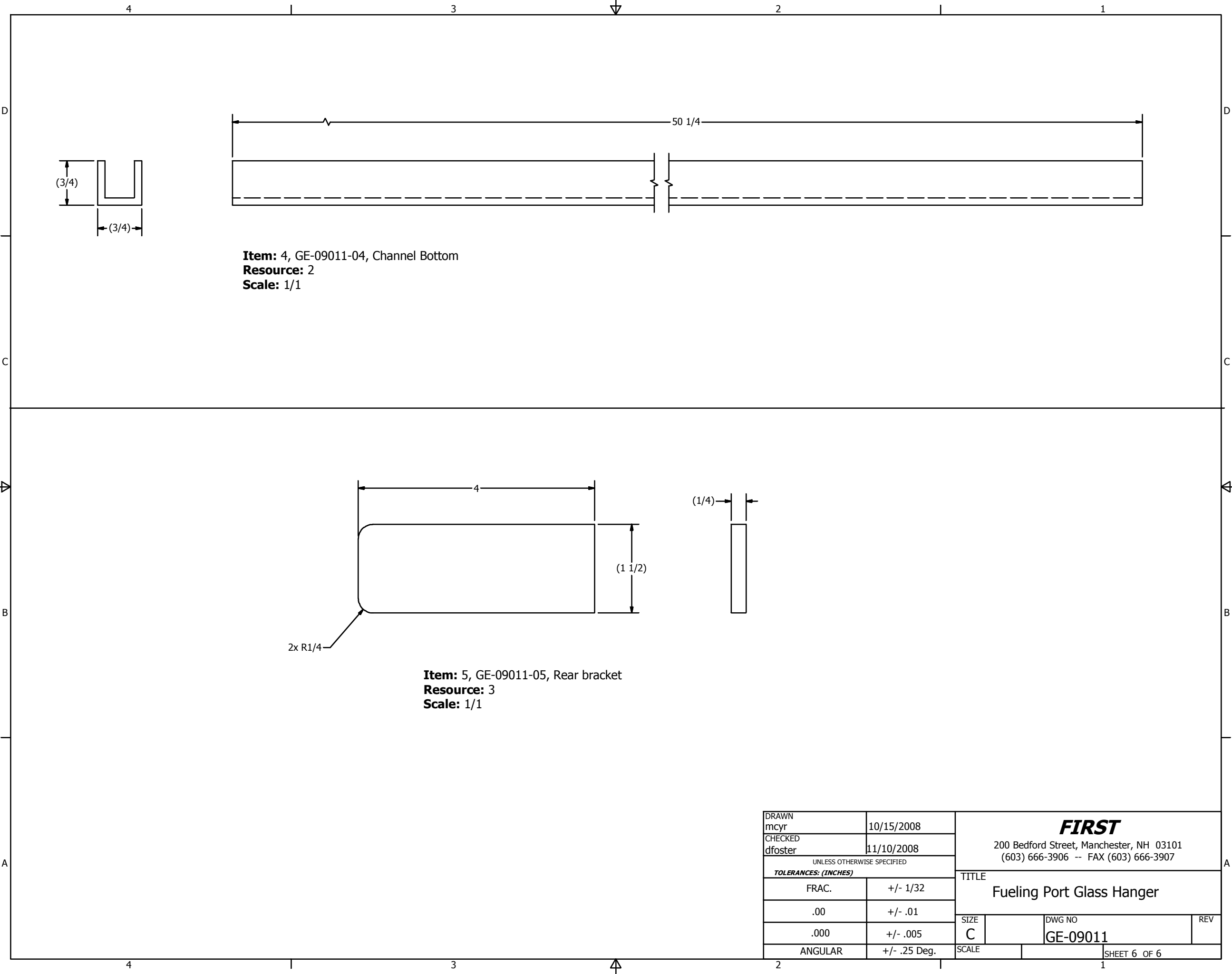


DETAIL D
SCALE 1/1

DETAIL E
SCALE 1/1

DRAWN mcyr		10/15/2008		<div>FIRST</div> <div>200 Bedford Street, Manchester, NH 03101 (603) 666-3906 -- FAX (603) 666-3907</div>			
CHECKED dfoster		11/10/2008					
UNLESS OTHERWISE SPECIFIED TOLERANCES: (INCHES)				<div>TITLE</div> <div>Fueling Port Glass Hanger</div> <div><div>SIZE C</div><div>DWG NO GE-09011</div><div>REV</div></div>			
FRAC.		+/- 1/32					
.00		+/- .01					
.000		+/- .005					
ANGULAR		+/- .25 Deg.					
				SCALE		SHEET 4 OF 6	





Item: 4, GE-09011-04, Channel Bottom
Resource: 2
Scale: 1/1

Item: 5, GE-09011-05, Rear bracket
Resource: 3
Scale: 1/1