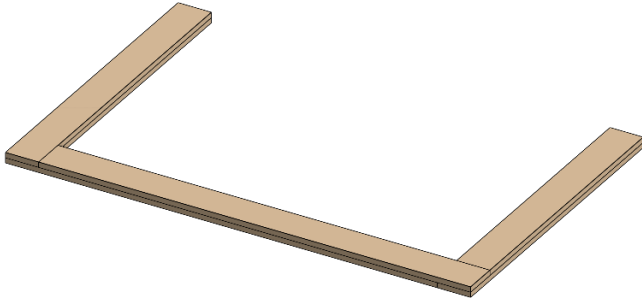


TE-26600 DEPOT



Description

This is a Depot, designed so that teams can practice acquiring Fuel. Each field element has multiple versions designed for teams. Before constructing this assembly, be sure to check [the Playing FIELD webpage](#) to confirm the design is the best fit for your team. In this document, you will find assembly instructions and drawings for this design.

CAD Files

CAD files are available in two formats. Links to both versions can be found on [the Playing FIELD webpage](#).

The Onshape version of the CAD files can be accessed. This design was created in Onshape, a **FIRST® Modeling Solutions Sponsor**.



STEP files of this assembly are included for the convenience of non-Onshape users.

Drawings

All drawing files have been exported to PDF Format. Drawings show the dimensions and details required to cut out individual parts. Assembly instructions can be found below in this document.

Shopping List (if building multiple team element designs, plywood and lumber can be consolidated)

Plywood and Lumber (Example Cut List is at end of Readme):

- 4' x 4' x 1/2" Thick Plywood – 1 Sheet

Hardware/Other:

- Wood Glue

Notes about Hardware

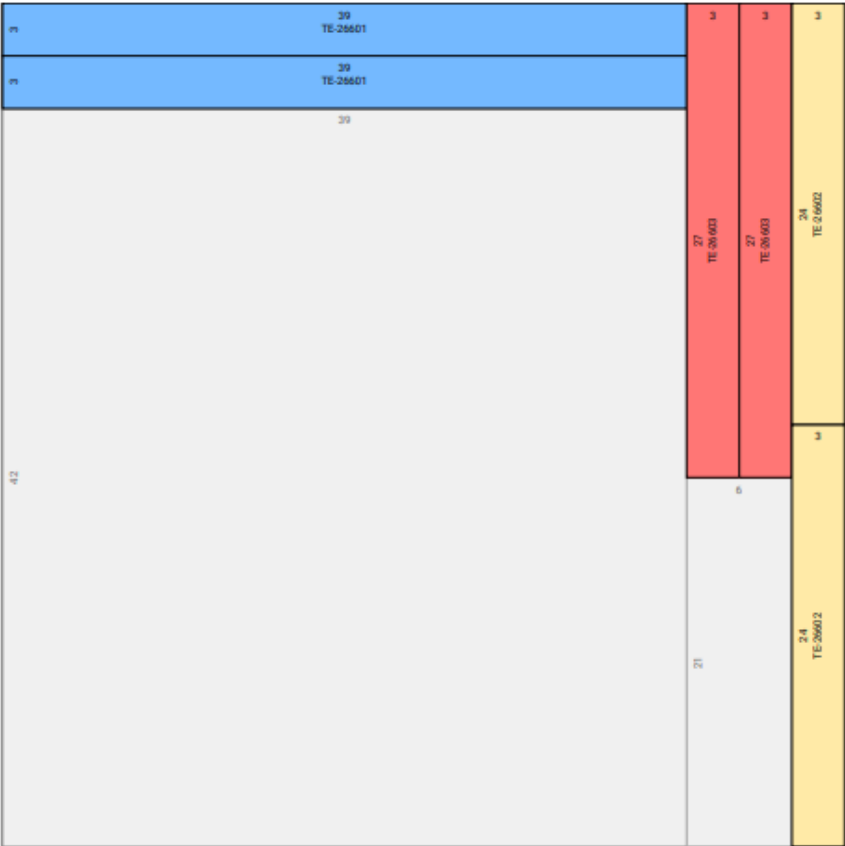
Wood Glue can be replaced with wood screws but may leave screws sticking out the underside of the assembly.

Notes about Materials

- Plywood and Hardboard Sheets – quality of plywood is up to the user. Plywood of lower qualities may contain voids and may warp more than high quality plywood. All dimensions listed are “nominal”. For example, ½” plywood is typically 15/32”.

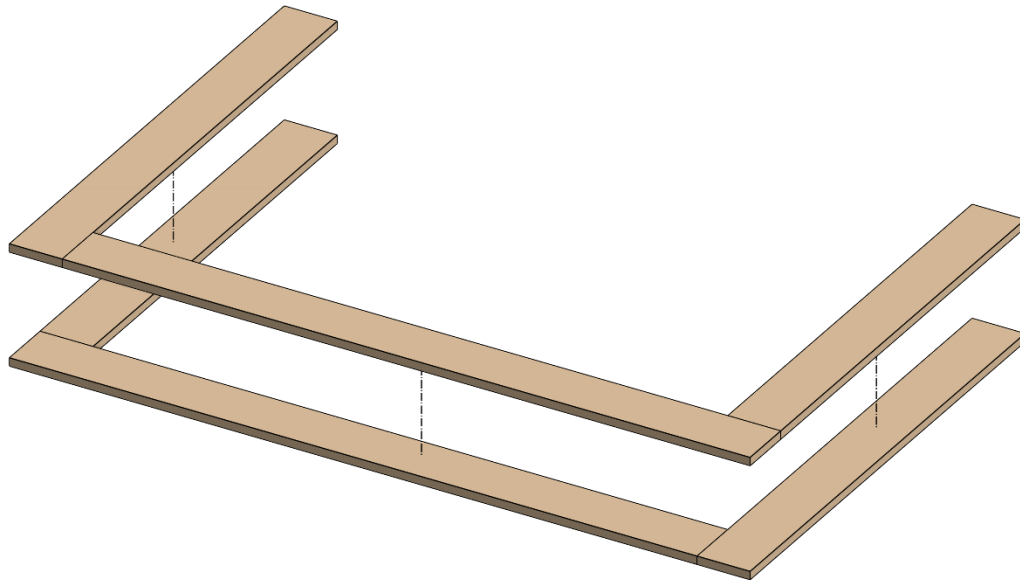
Example Cut List (All units are Inches):

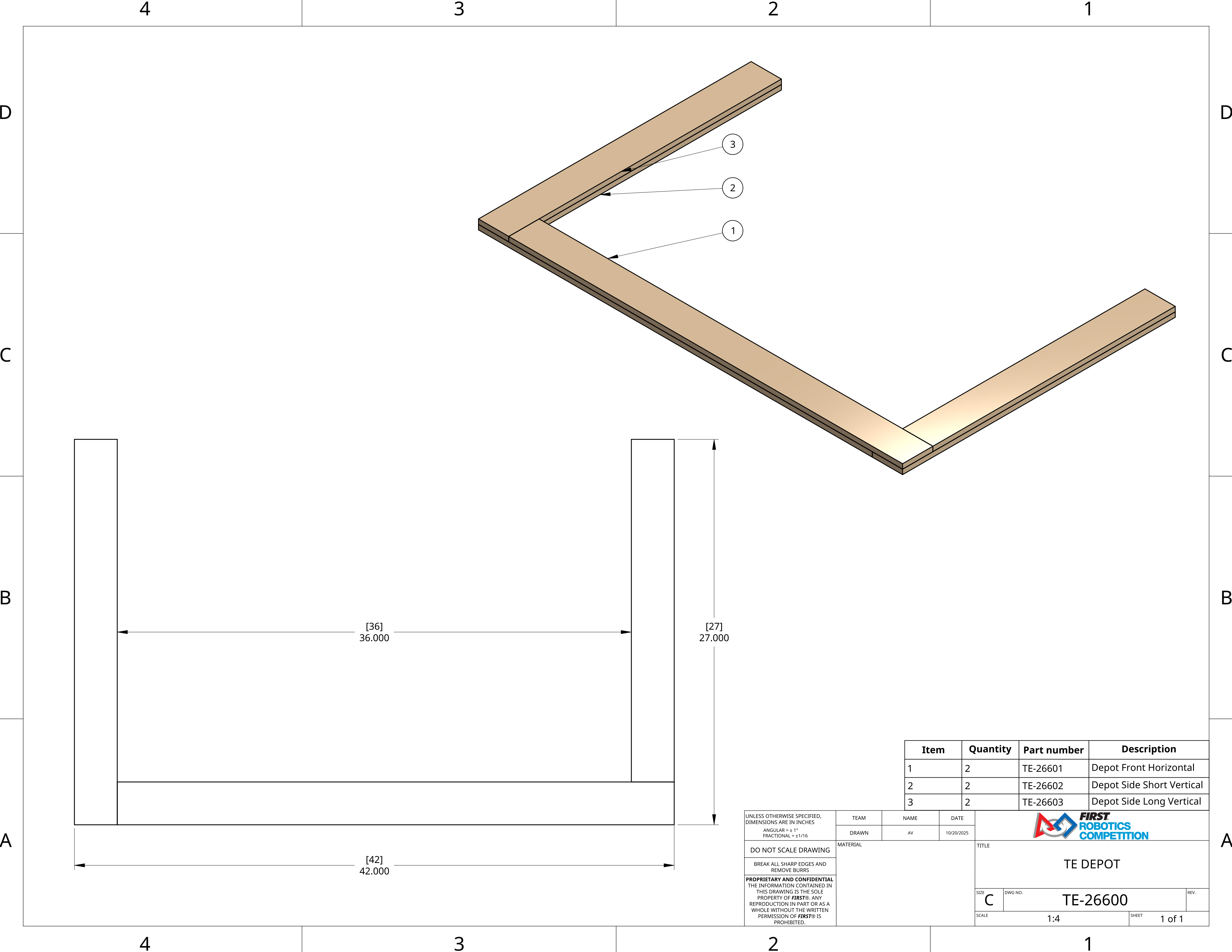
1/2” Plywood (can be combined with all other Team Elements to reduce number of purchased panels):

Layout ID	Repetition	Stock dimensions			Panel	Qty
A	1x	48 x 48			39 x 3 / TE-26601	2
					3 x 27 / TE-26603	2
					3 x 24 / TE-26602	2
					Cuts in layout	
					The length of cuts	210
					The number of cuts	7

Assembly Instructions

1. Attach the depot together using wood glue, by stacking and staggering TE-26602 (Depot Side Short Vertical) and TE-26603 (Depot Side Long Vertical) on the sides and TE-26601 (Depot Front Horizontal) on the front.





Item	Quantity	Part number	Description
1	2	TE-26601	Depot Front Horizontal
2	2	TE-26602	Depot Side Short Vertical
3	2	TE-26603	Depot Side Long Vertical

UNLESS OTHERWISE SPECIFIED,
DIMENSIONS ARE IN INCHES
ANGULAR = ± 1°
FRACTIONAL = ± 1/16

DO NOT SCALE DRAWING

BREAK ALL SHARP EDGES AND
REMOVE BURRS

PROPRIETARY AND CONFIDENTIAL
THE INFORMATION CONTAINED IN
THIS DRAWING IS THE SOLE
PROPERTY OF **FIRST®**. ANY
REPRODUCTION IN PART OR AS A
WHOLE WITHOUT THE WRITTEN
PERMISSION OF **FIRST®** IS
PROHIBITED.

TEAM

DRAWN


MATERIAL

NAME

AV

DATE

10/20/2025

**FIRST
ROBOTICS
COMPETITION**

TITLE

TE DEPOT

SIZE

C

DWG NO.

TE-26600

REV.

SCALE

1:4

SHEET

1 of 1

D

C

B

A

D

C

B

A

4

3

2

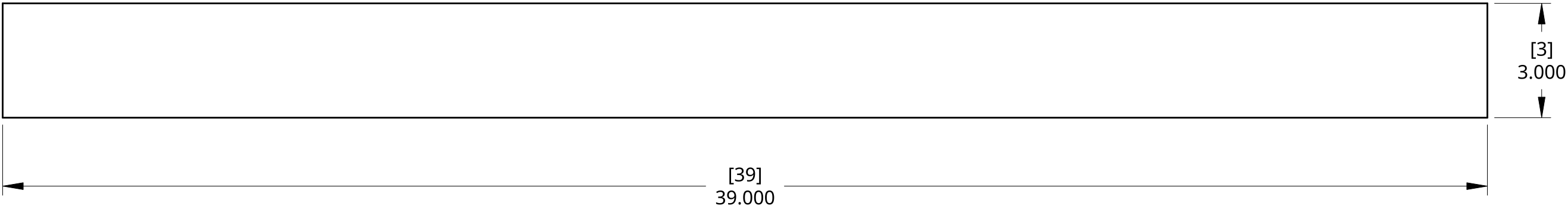
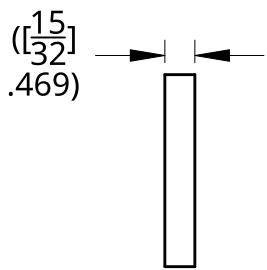
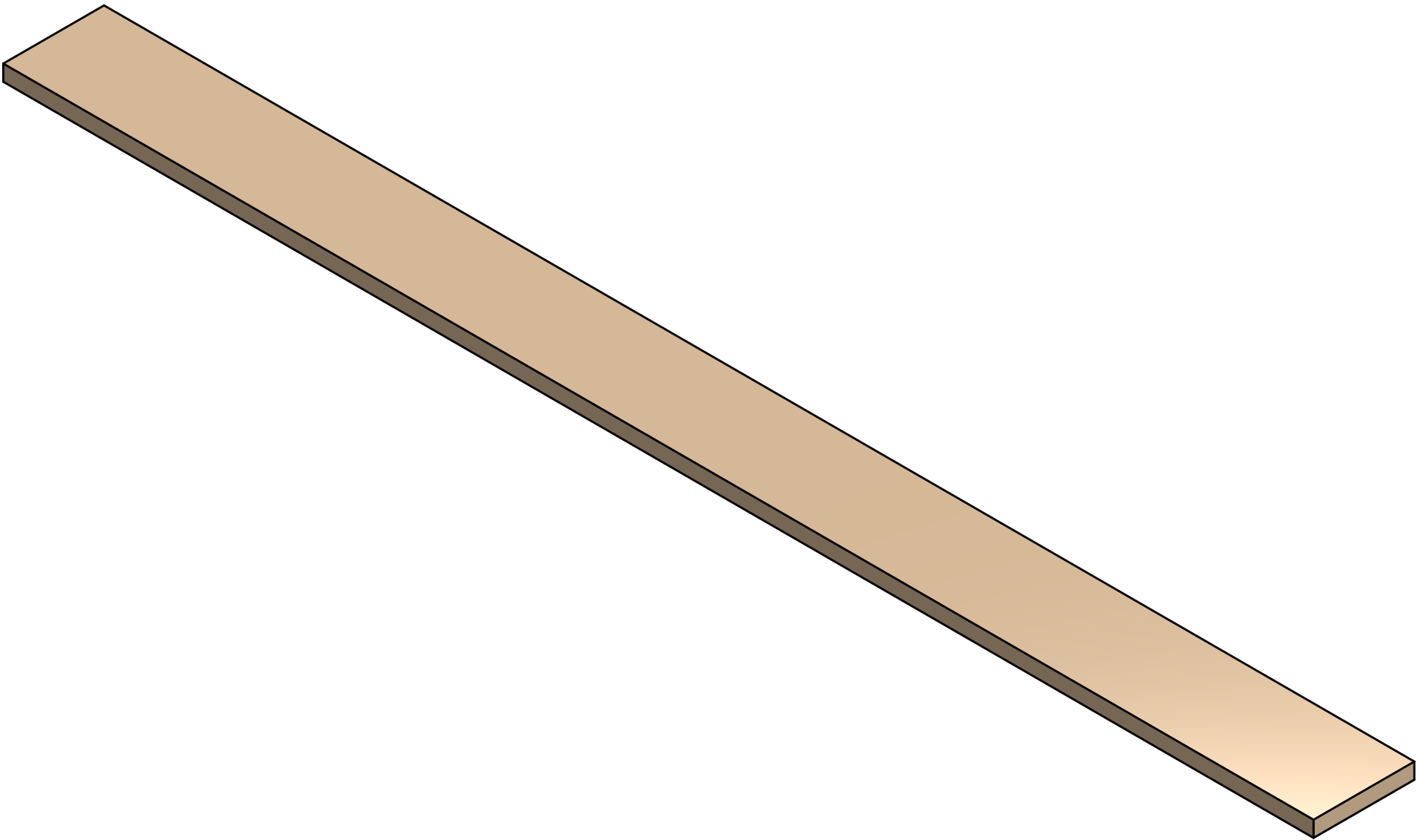
1


4

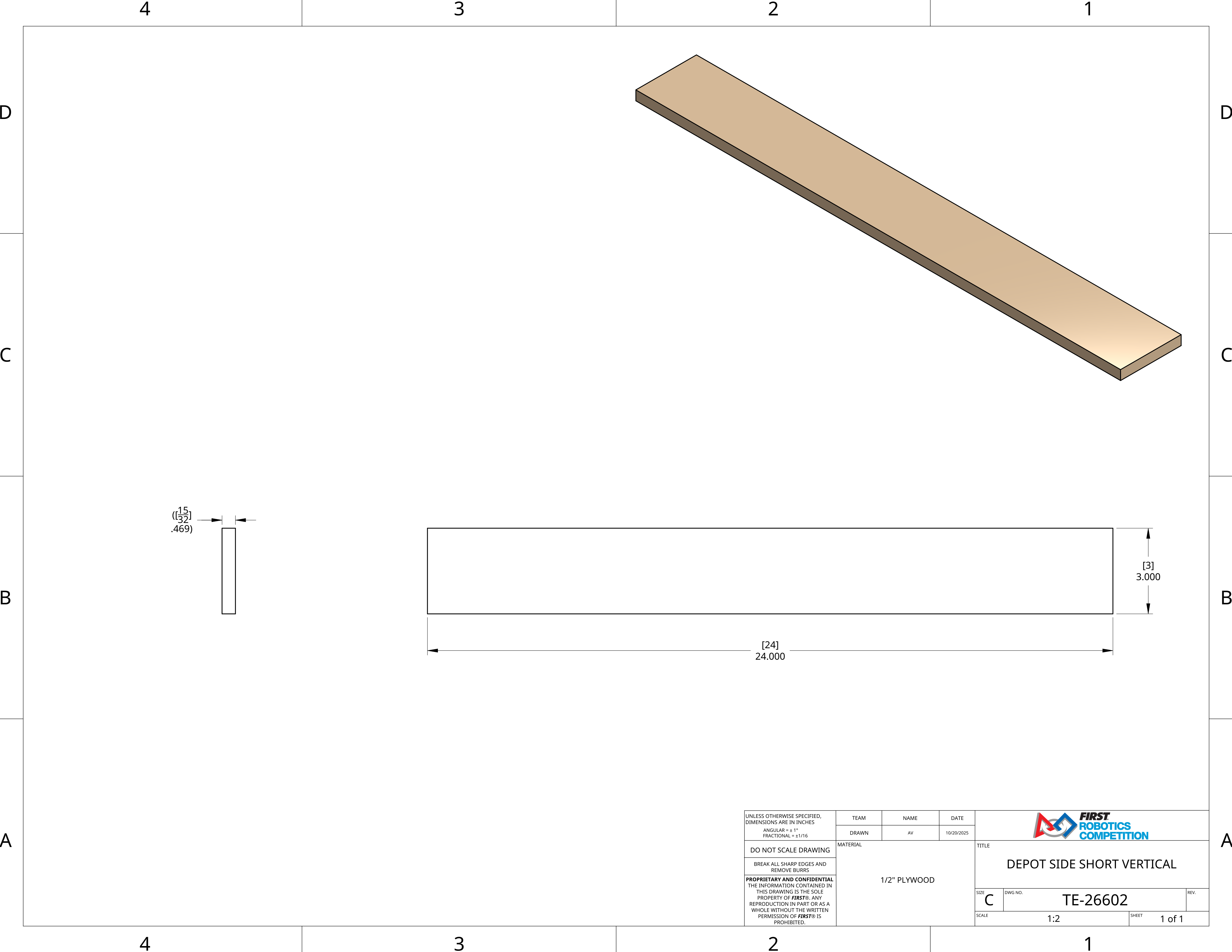
3

2

1



UNLESS OTHERWISE SPECIFIED, DIMENSIONS ARE IN INCHES ANGULAR = ± 1° FRACTIONAL = ±1/16	TEAM	NAME	DATE			
	DRAWN	AV	10/20/2025			
DO NOT SCALE DRAWING	MATERIAL 1/2" PLYWOOD			TITLE		
BREAK ALL SHARP EDGES AND REMOVE BURRS				DEPOT FRONT HORIZONTAL		
PROPRIETARY AND CONFIDENTIAL THE INFORMATION CONTAINED IN THIS DRAWING IS THE SOLE PROPERTY OF <i>FIRST</i> ®. ANY REPRODUCTION IN PART OR AS A WHOLE WITHOUT THE WRITTEN PERMISSION OF <i>FIRST</i> ® IS PROHIBITED.				SIZE	DWG NO.	REV.
				C	TE-26601	
				SCALE	1:3	SHEET



D

C

B

A

D

C

B

A

4

3

2

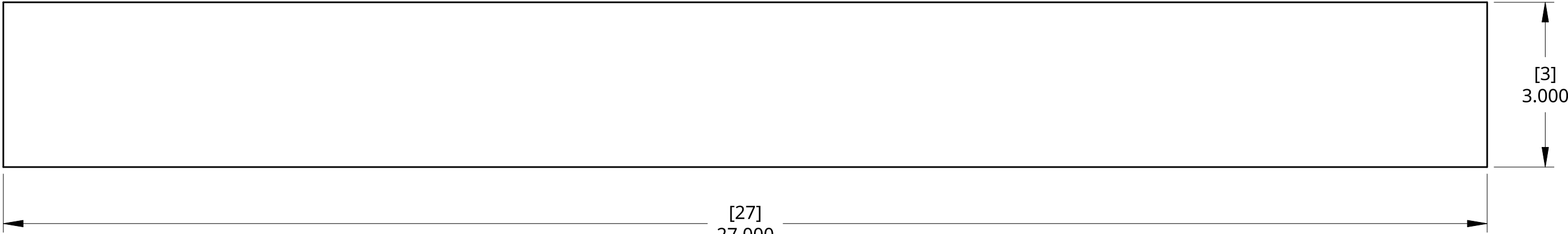
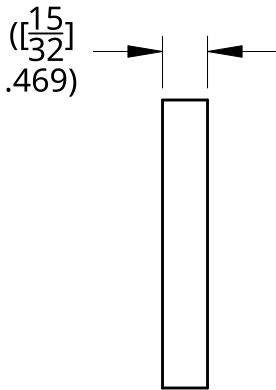
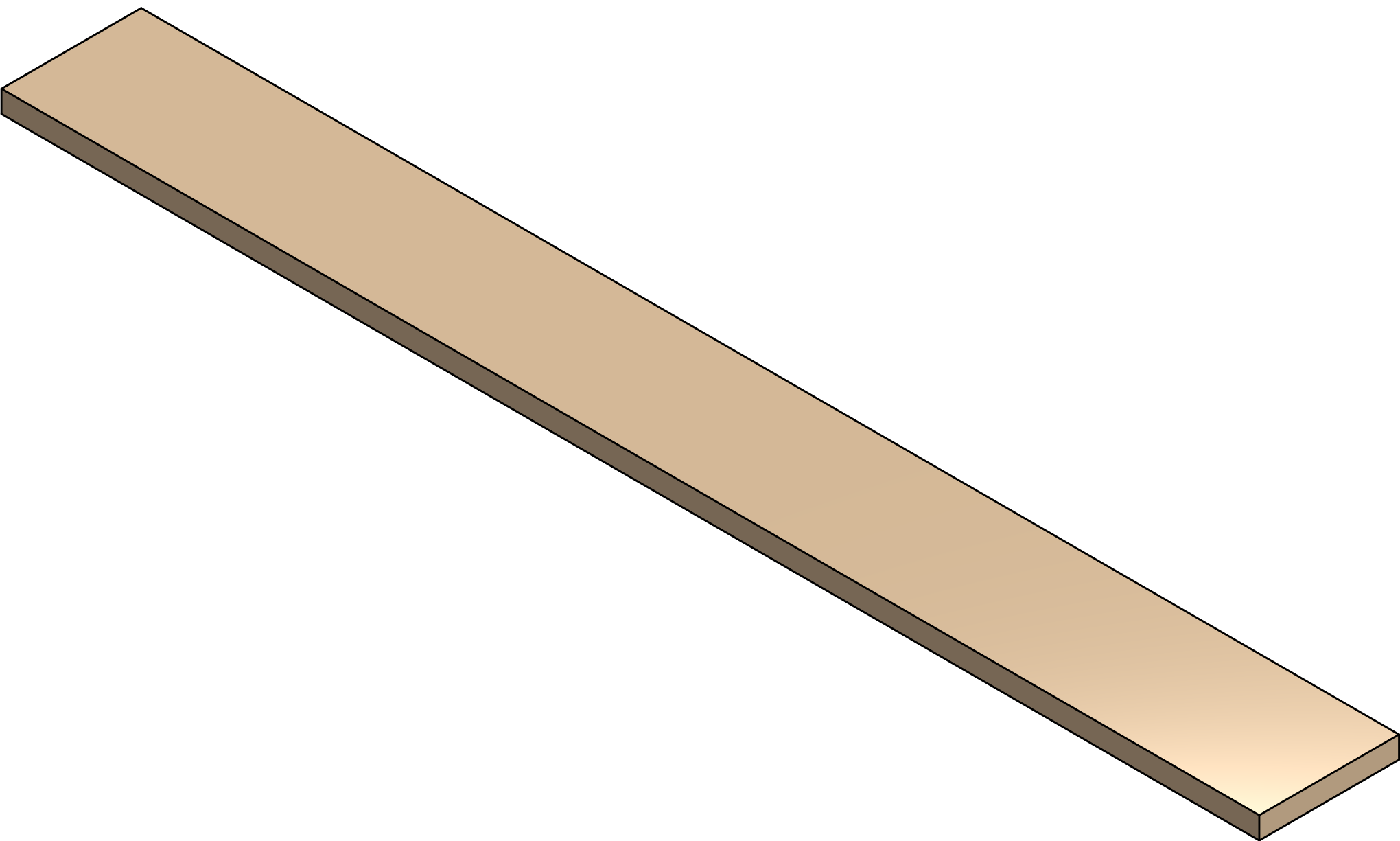
1


4

3

2

1



UNLESS OTHERWISE SPECIFIED, DIMENSIONS ARE IN INCHES ANGULAR = ± 1° FRACTIONAL = ± 1/16	TEAM	NAME	DATE		
	DRAWN	AV	10/20/2025		
DO NOT SCALE DRAWING	MATERIAL <				