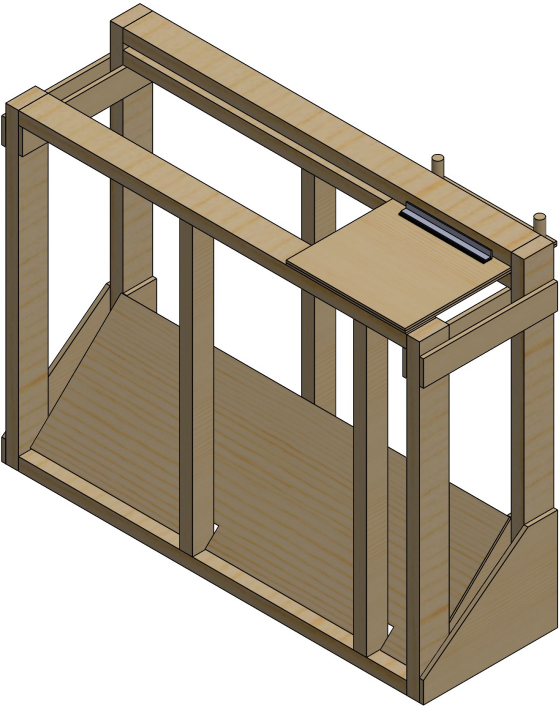


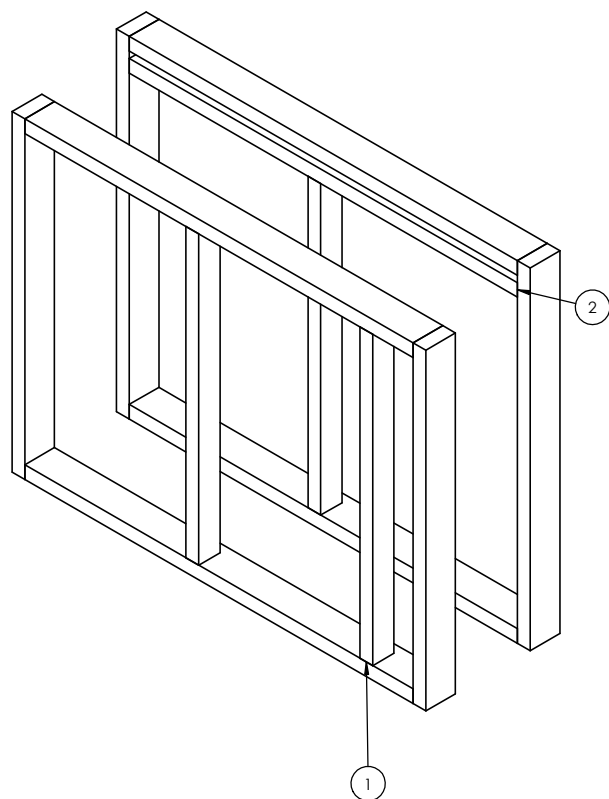


ITEM NO.	PART NUMBER	DESCRIPTION	QTY.
1	TE-23061	Front grill assembly	1
2	TE-23064	Back Frame assembly	1
3	TE-23066	slide assembly	1
4	TE-23068	slide angle	2
5	TE-23069	lower gusset	2
6	TE-23070	ramp inside support	2
7	TE-23071	Ramp	1
8	TE-23073	upper gusset	4
9	TE-23074	Slide Handle	2
10	Hook_1_10	1" x 10" Hook, Adhesive Backed	2
11	Loop_1_10	3M 1" adhesive backed loop	2

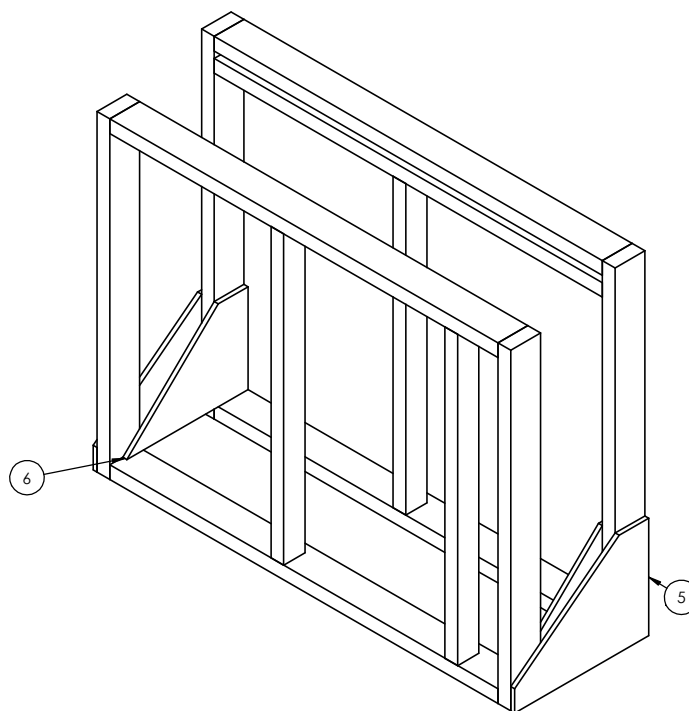


UNLESS OTHERWISE SPECIFIED: DIMENSIONS ARE IN INCHES TOLERANCES: FRACTIONAL $\pm 1/16$ ANGULAR: MACH $\pm 1^\circ$ BEND $\pm 1^\circ$ TWO PLACE DECIMAL $\pm .13$ THREE PLACE DECIMAL $\pm .125$ MATERIAL/FINISH: DO NOT SCALE DRAWING	TEAM	NAME	DATE	  TITLE: double substation SIZE C SCALE: 1:8	DWG. NO. TE-23060 SHEET 1 OF 5	REV
	DRAWN	NW	12/26/2022			
	PROPRIETARY AND CONFIDENTIAL THE INFORMATION CONTAINED IN THIS DRAWING IS THE SOLE PROPERTY OF FIRST® . ANY REPRODUCTION IN PART OR AS A WHOLE WITHOUT THE WRITTEN PERMISSION OF FIRST® IS PROHIBITED.					
	COMMENTS: REMOVE ALL BURRS AND SHARP EDGES.					

Step 1.



Step 2.





Notes:

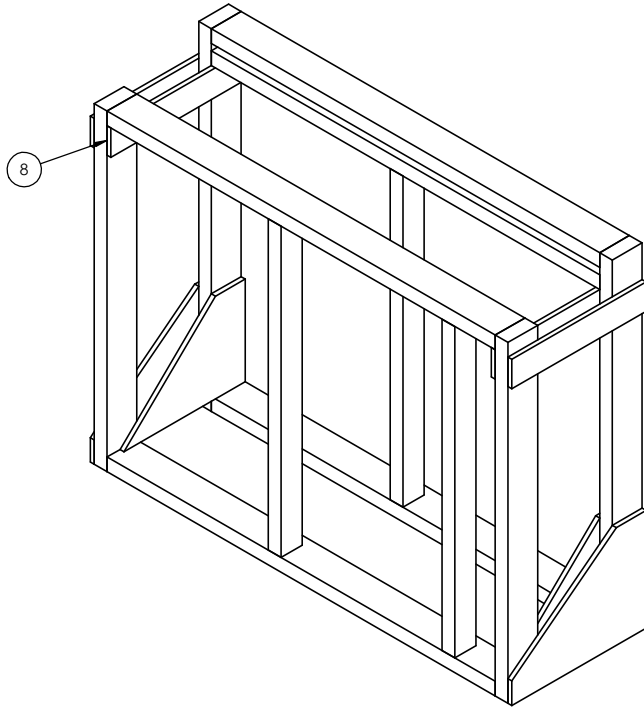
1. After assembled stand up (1) and (2).

Notes:

1. Attach (5) with 1.5" wood screws in two locations.
2. Attach (6) with 1.5" wood screws in two locations.

UNLESS OTHERWISE SPECIFIED:	TEAM	NAME	DATE	 		
	DRAWN	NW	12/26/2022			
DIMENSIONS ARE IN INCHES TOLERANCES: FRACTIONAL $\pm 1/16$ ANGULAR: MACH $\pm 1^\circ$ BEND $\pm 1^\circ$ TWO PLACE DECIMAL $\pm .13$ THREE PLACE DECIMAL $\pm .125$	PROPRIETARY AND CONFIDENTIAL			TITLE: double substation		
	THE INFORMATION CONTAINED IN THIS DRAWING IS THE SOLE PROPERTY OF FIRST® . ANY REPRODUCTION IN PART OR AS A WHOLE WITHOUT THE WRITTEN PERMISSION OF FIRST® IS PROHIBITED.					
MATERIAL/FINISH:	COMMENTS:			SIZE	DWG. NO.	REV
	REMOVE ALL BURRS AND SHARP EDGES.			C	TE-23060	
DO NOT SCALE DRAWING				SCALE: 1:8		SHEET 2 OF 5

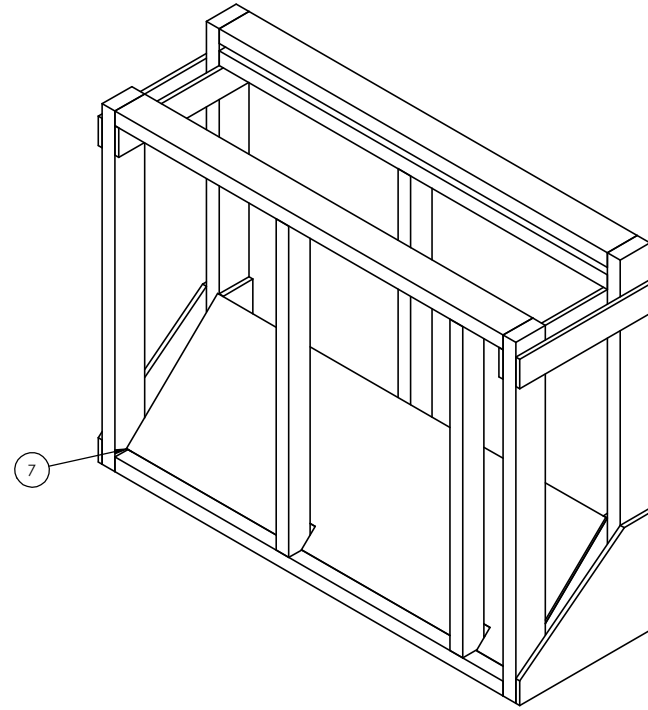
Step 3.



Notes:



1. Attach (8) flush to bottom of top 2x4 with 1.5" wood screws in 4 locations.

Step 4.

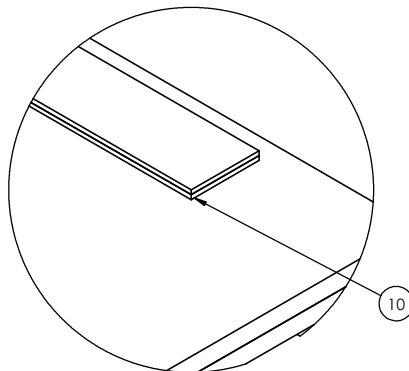
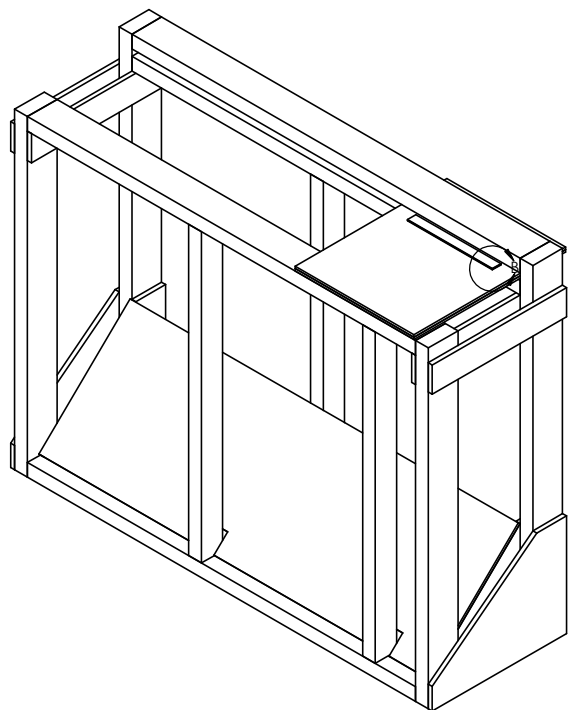


Notes:

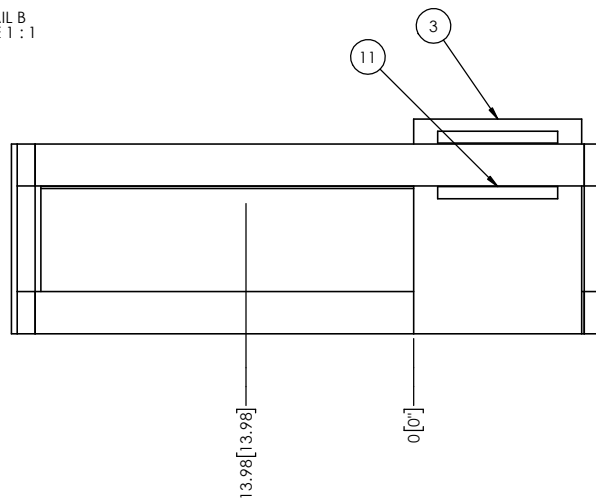
1. Lay (7) on step 2.

UNLESS OTHERWISE SPECIFIED:	TEAM	NAME	DATE	 	
	DRAWN	NW	12/26/2022		
DIMENSIONS ARE IN INCHES TOLERANCES: FRACTIONAL $\pm 1/16$ ANGULAR: MACH $\pm 1^\circ$ BEND $\pm 1^\circ$ TWO PLACE DECIMAL $\pm .13$ THREE PLACE DECIMAL $\pm .125$	PROPRIETARY AND CONFIDENTIAL			TITLE:	
	THE INFORMATION CONTAINED IN THIS DRAWING IS THE SOLE PROPERTY OF FIRST® . ANY REPRODUCTION IN PART OR AS A WHOLE WITHOUT THE WRITTEN PERMISSION OF FIRST® IS PROHIBITED.			double substation	
	MATERIAL/FINISH:			SIZE	DWG. NO.
	COMMENTS: REMOVE ALL BURRS AND SHARP EDGES.			C	TE-23060
				SCALE: 1:8	
DO NOT SCALE DRAWING				SHEET 3 OF 5	

Step 5,






DETAIL B
SCALE 1 : 1

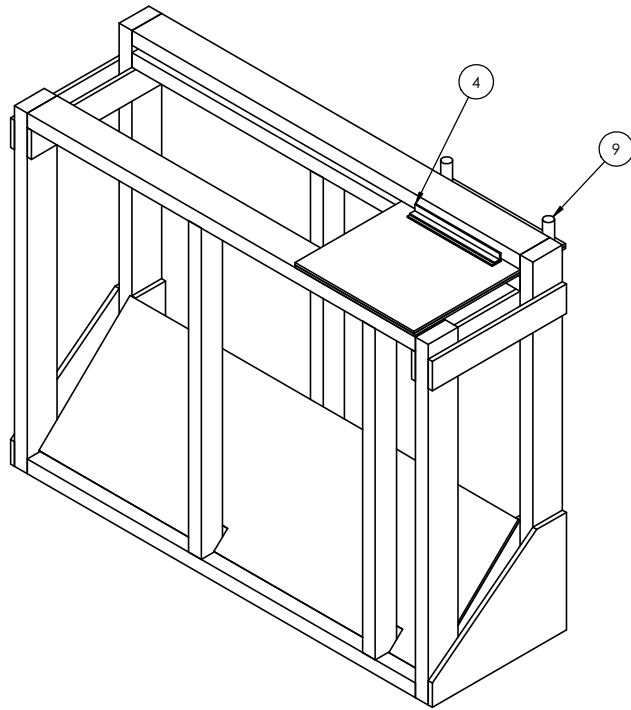


Notes:

1. Attach 10 and 11 to 3 after sliding into assembly.
2. If 3 is not sliding easily you can attach loop to bottom to help.

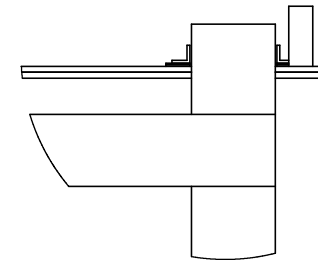
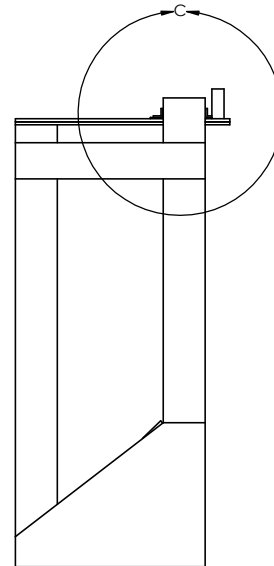
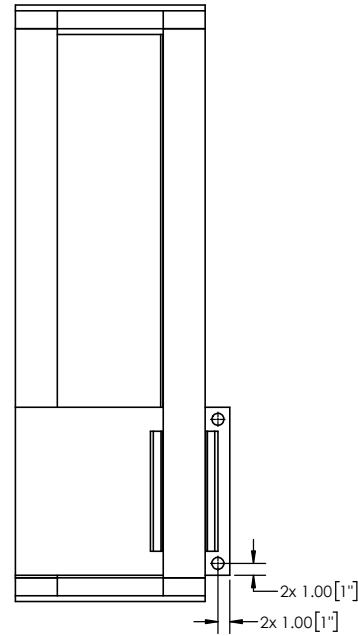
UNLESS OTHERWISE SPECIFIED: DIMENSIONS ARE IN INCHES TOLERANCES: FRACTIONAL ±1/16 ANGULAR: MACH±1° BEND ±1° TWO PLACE DECIMAL ±.13 THREE PLACE DECIMAL ±.125 MATERIAL/FINISH: DO NOT SCALE DRAWING	TEAM	NAME	DATE	   TITLE: double substation SIZE DWG. NO. REV C TE-23060 SCALE: 1:8 SHEET 4 OF 5
	DRAWN	NW	12/26/2022	
	PROPRIETARY AND CONFIDENTIAL THE INFORMATION CONTAINED IN THIS DRAWING IS THE SOLE PROPERTY OF FIRST® . ANY REPRODUCTION IN PART OR AS A WHOLE WITHOUT THE WRITTEN PERMISSION OF FIRST® IS PROHIBITED. COMMENTS: REMOVE ALL BURRS AND SHARP EDGES.			

Step 6.





Notes:

1. Attach (4) to the hook or loop in step 5 .
2. Attach both (9) to slide assembly with 1.5" wood screws through bottom.



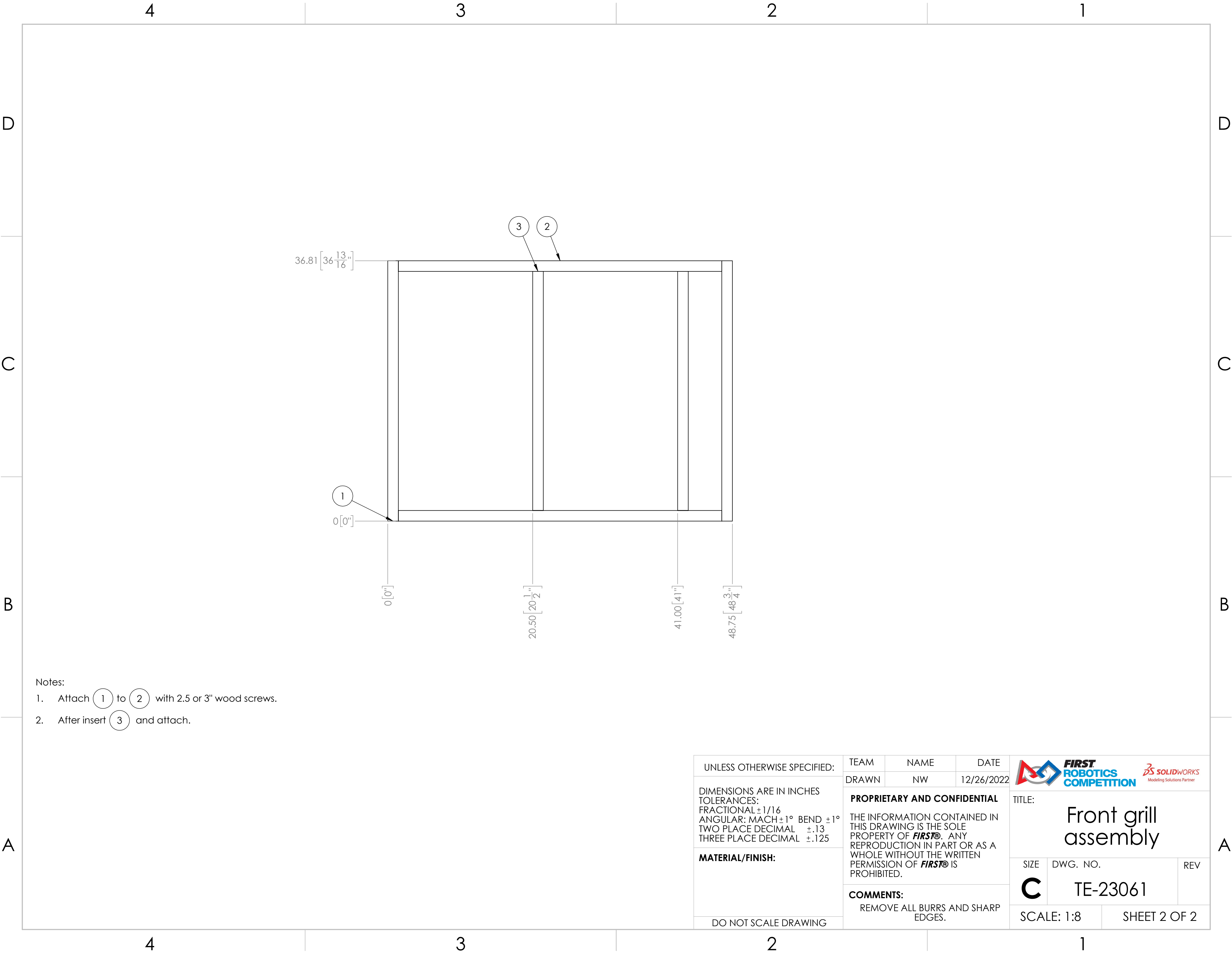
DETAIL C
SCALE 1 : 4

UNLESS OTHERWISE SPECIFIED:	TEAM	NAME	DATE	 		
	DRAWN	NW	12/26/2022			
DIMENSIONS ARE IN INCHES TOLERANCES: FRACTIONAL ±1/16 ANGULAR: MACH ±1° BEND ±1° TWO PLACE DECIMAL ±.13 THREE PLACE DECIMAL ±.125	PROPRIETARY AND CONFIDENTIAL			TITLE: double substation		
	THE INFORMATION CONTAINED IN THIS DRAWING IS THE SOLE PROPERTY OF FIRST® . ANY REPRODUCTION IN PART OR AS A WHOLE WITHOUT THE WRITTEN PERMISSION OF FIRST® IS PROHIBITED.					
MATERIAL/FINISH:	COMMENTS:			SIZE	DWG. NO.	REV
				C	TE-23060	
DO NOT SCALE DRAWING	REMOVE ALL BURRS AND SHARP EDGES.			SCALE: 1:8		SHEET 5 OF 5





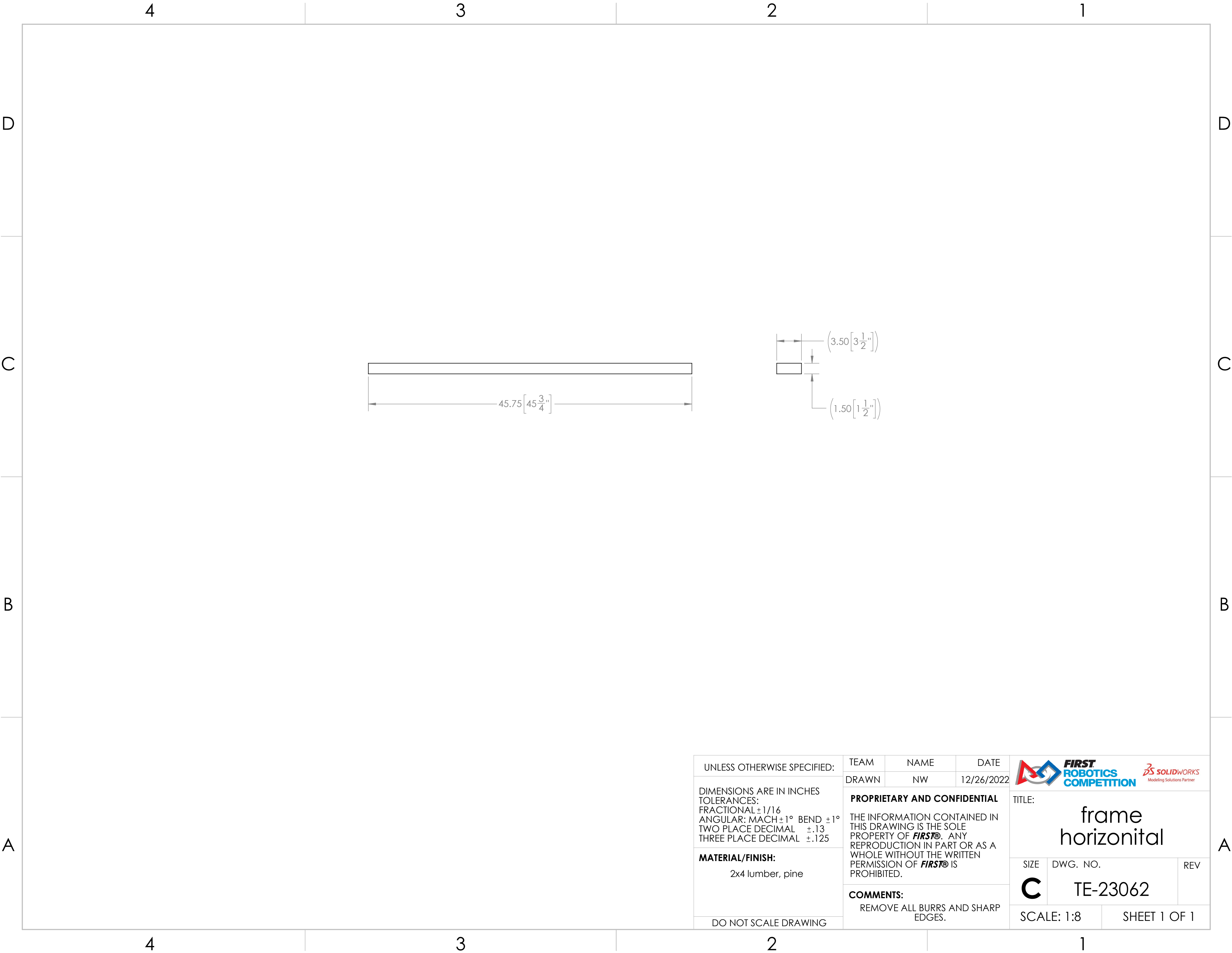
FIRST
ROBOTICS
COMPETITION





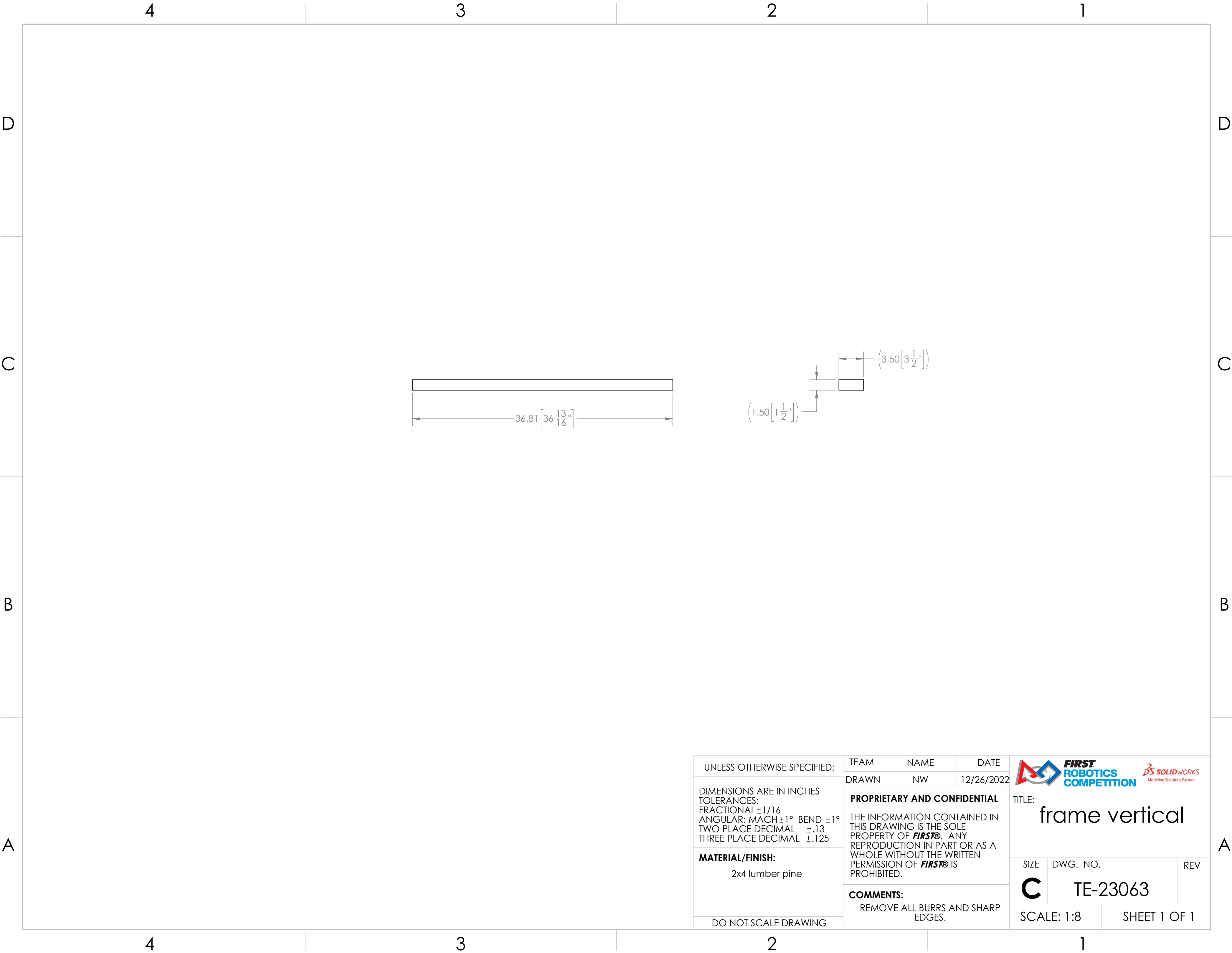


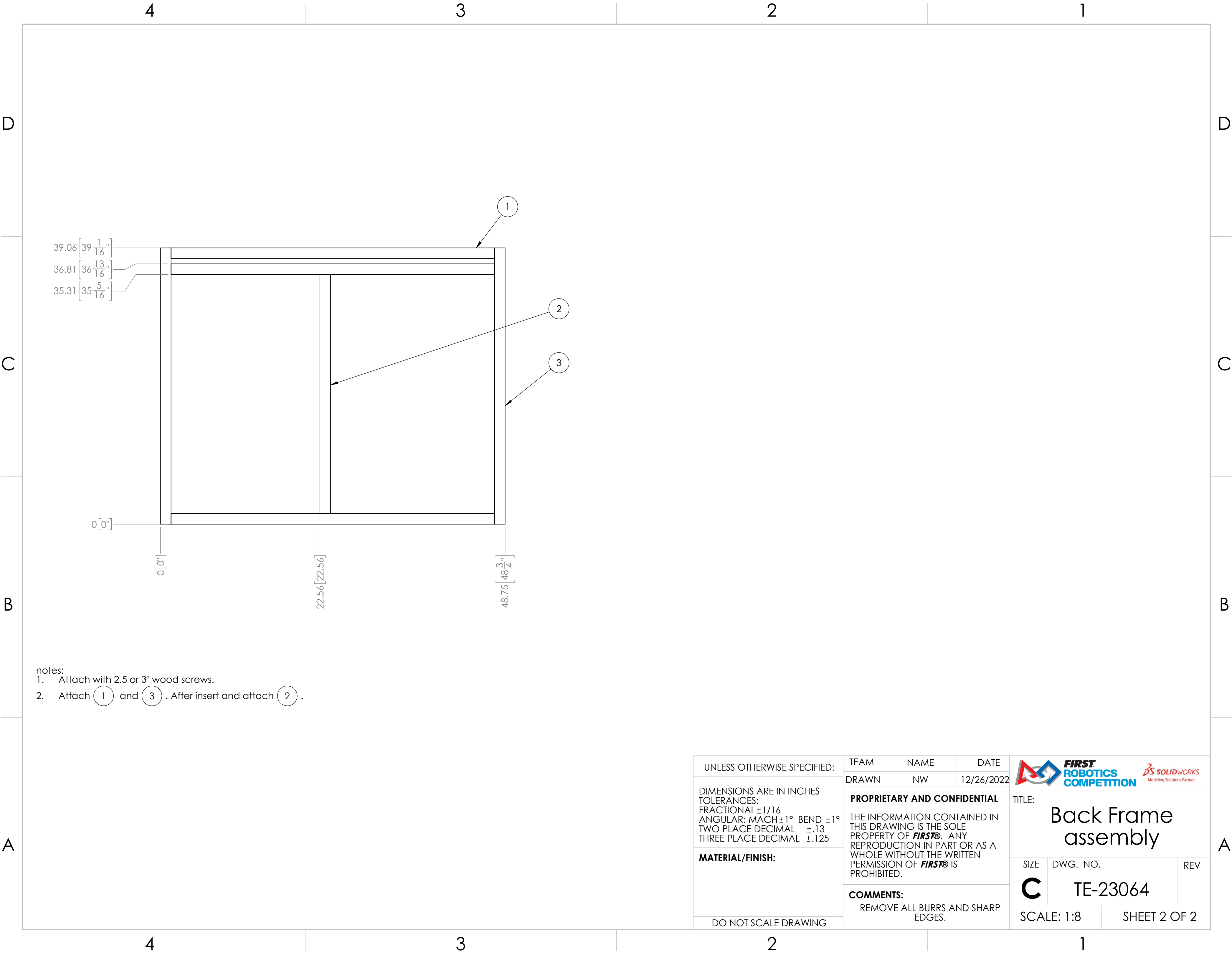
- Notes:
- 1. Attach 1 to 2 with 2.5 or 3" wood screws.
 - 2. After insert 3 and attach.



UNLESS OTHERWISE SPECIFIED: DIMENSIONS ARE IN INCHES TOLERANCES: FRACTIONAL ±1/16 ANGULAR: MACH ±1° BEND ±1° TWO PLACE DECIMAL ±.13 THREE PLACE DECIMAL ±.125 MATERIAL/FINISH: DO NOT SCALE DRAWING	TEAM	NAME	DATE	<div></div>	
	DRAWN	NW	12/26/2022		
	PROPRIETARY AND CONFIDENTIAL THE INFORMATION CONTAINED IN THIS DRAWING IS THE SOLE PROPERTY OF FIRST® . ANY REPRODUCTION IN PART OR AS A WHOLE WITHOUT THE WRITTEN PERMISSION OF FIRST® IS PROHIBITED. COMMENTS: REMOVE ALL BURRS AND SHARP EDGES.				
TITLE:				Front grill assembly	
SIZE		DWG. NO.		REV	
C		TE-23061			
SCALE: 1:8			SHEET 2 OF 2		

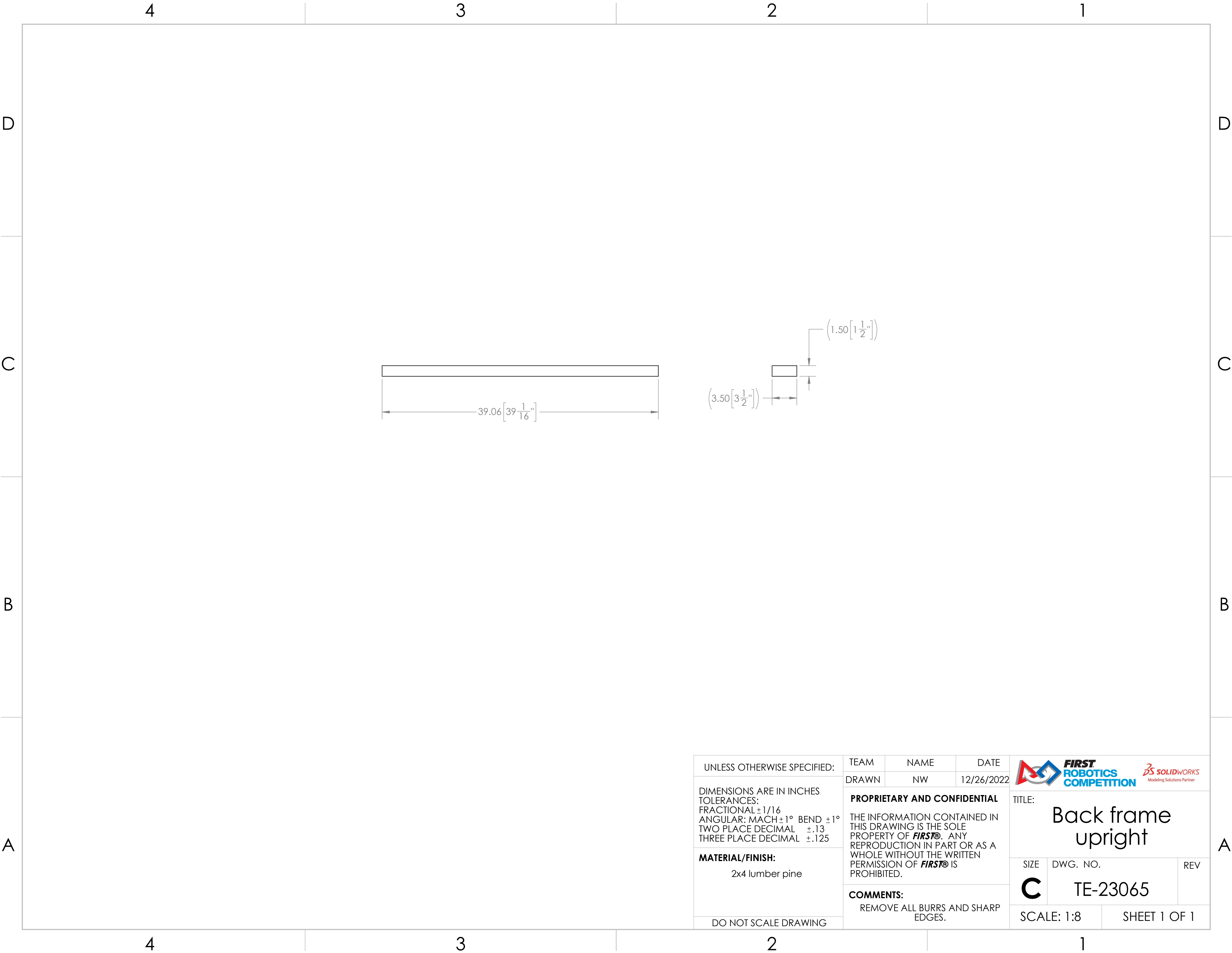


UNLESS OTHERWISE SPECIFIED: DIMENSIONS ARE IN INCHES TOLERANCES: FRACTIONAL ±1/16 ANGULAR: MACH ±1° BEND ±1° TWO PLACE DECIMAL ±.13 THREE PLACE DECIMAL ±.125 MATERIAL/FINISH: 2x4 lumber, pine DO NOT SCALE DRAWING	TEAM	NAME	DATE	<div></div> <div>TITLE: frame horizontal</div>		
	DRAWN	NW	12/26/2022			
	PROPRIETARY AND CONFIDENTIAL THE INFORMATION CONTAINED IN THIS DRAWING IS THE SOLE PROPERTY OF FIRST® . ANY REPRODUCTION IN PART OR AS A WHOLE WITHOUT THE WRITTEN PERMISSION OF FIRST® IS PROHIBITED. COMMENTS: REMOVE ALL BURRS AND SHARP EDGES.			SIZE	DWG. NO.	REV
C				TE-23062		
SCALE: 1:8				SHEET 1 OF 1		

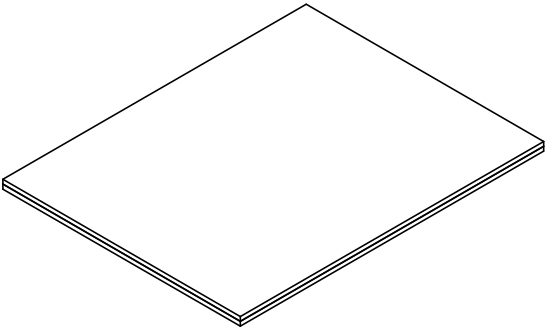
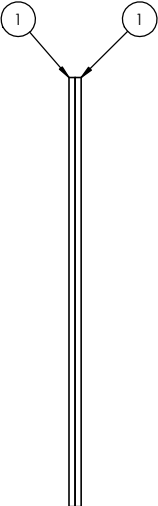
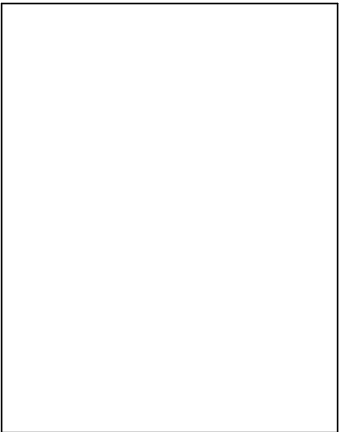






UNLESS OTHERWISE SPECIFIED: DIMENSIONS ARE IN INCHES TOLERANCES: FRACTIONAL ±1/16 ANGULAR: MACH ±1° BEND ±1° TWO PLACE DECIMAL ±.13 THREE PLACE DECIMAL ±.125 MATERIAL/FINISH: DO NOT SCALE DRAWING	TEAM	NAME	DATE	<div></div> <div>TITLE: Back Frame assembly</div>		
	DRAWN	NW	12/26/2022			
	PROPRIETARY AND CONFIDENTIAL THE INFORMATION CONTAINED IN THIS DRAWING IS THE SOLE PROPERTY OF FIRST® . ANY REPRODUCTION IN PART OR AS A WHOLE WITHOUT THE WRITTEN PERMISSION OF FIRST® IS PROHIBITED. COMMENTS: REMOVE ALL BURRS AND SHARP EDGES.					
				SIZE	DWG. NO.	REV
				C	TE-23064	
				SCALE: 1:8		SHEET 2 OF 2

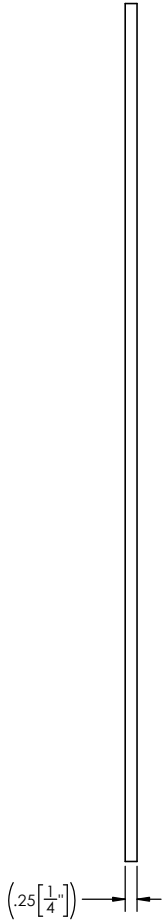
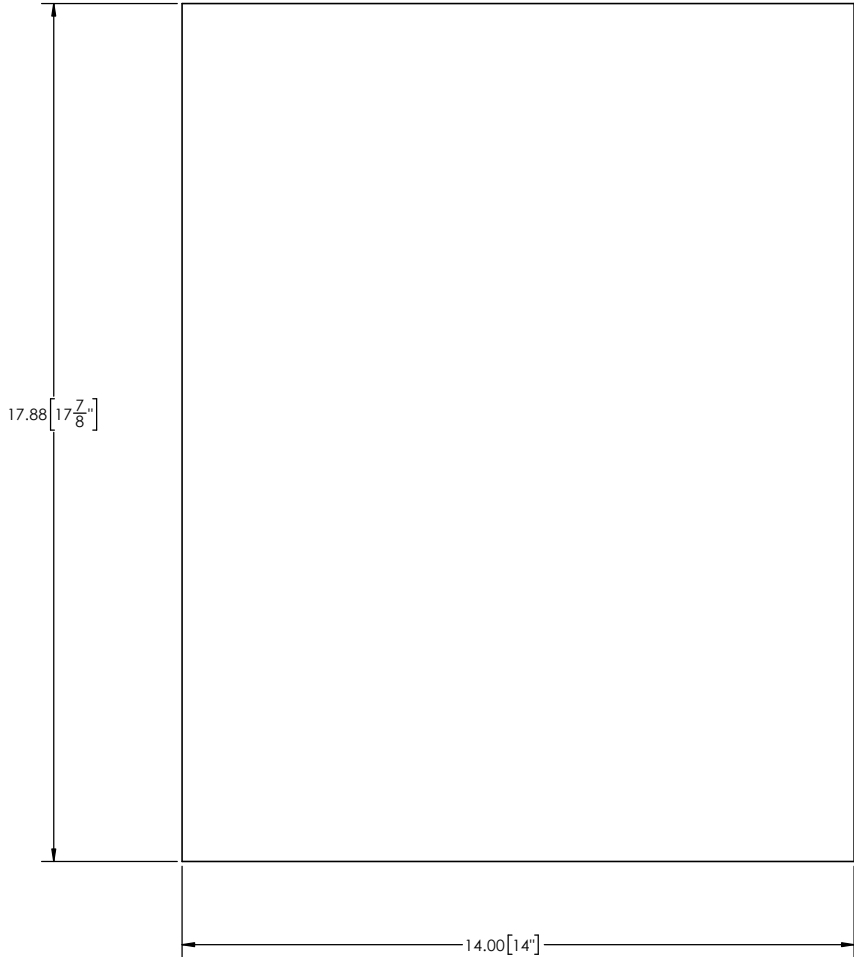




ITEM NO.	PART NUMBER	DESCRIPTION	QTY.
1	TE-23067	slide base	2

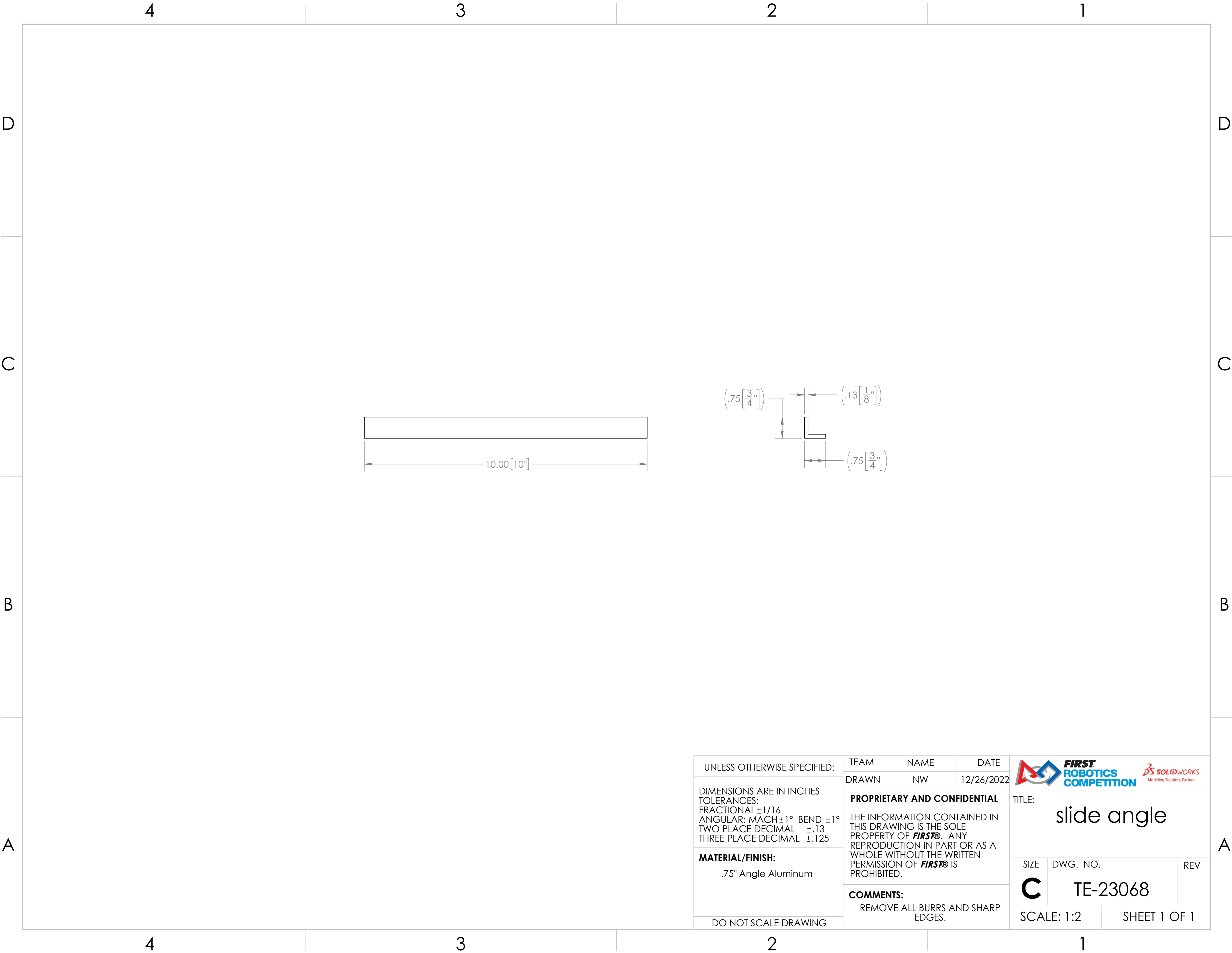


- Notes:
1. Glue together (1) and leave clamped and weighed down over 24hr.
 2. The rougher sides of the material should be glued together, leaving the smoother sides both facing out.

UNLESS OTHERWISE SPECIFIED: DIMENSIONS ARE IN INCHES TOLERANCES: FRACTIONAL $\pm 1/16$ ANGULAR: MACH $\pm 1^\circ$ BEND $\pm 1^\circ$ TWO PLACE DECIMAL $\pm .13$ THREE PLACE DECIMAL $\pm .125$ MATERIAL/FINISH: DO NOT SCALE DRAWING	TEAM	NAME	DATE	 	
	DRAWN	NW	12/26/2022		
	PROPRIETARY AND CONFIDENTIAL			TITLE: slide assembly	
	THE INFORMATION CONTAINED IN THIS DRAWING IS THE SOLE PROPERTY OF FIRST® . ANY REPRODUCTION IN PART OR AS A WHOLE WITHOUT THE WRITTEN PERMISSION OF FIRST® IS PROHIBITED.				
	COMMENTS: REMOVE ALL BURRS AND SHARP EDGES.			SIZE C	DWG. NO. TE-23066
			SCALE: 1:4		SHEET 1 OF 1



UNLESS OTHERWISE SPECIFIED: DIMENSIONS ARE IN INCHES TOLERANCES: FRACTIONAL $\pm 1/16$ ANGULAR: MACH $\pm 1^\circ$ BEND $\pm 1^\circ$ TWO PLACE DECIMAL $\pm .13$ THREE PLACE DECIMAL $\pm .125$ MATERIAL/FINISH: 5mm hardboard DO NOT SCALE DRAWING	TEAM	NAME	DATE	 	
	DRAWN	NW	12/26/2022		
	PROPRIETARY AND CONFIDENTIAL			TITLE:	
	THE INFORMATION CONTAINED IN THIS DRAWING IS THE SOLE PROPERTY OF FIRST ®. ANY REPRODUCTION IN PART OR AS A WHOLE WITHOUT THE WRITTEN PERMISSION OF FIRST ® IS PROHIBITED.			slide base	
COMMENTS: REMOVE ALL BURRS AND SHARP EDGES.		SIZE	DWG. NO.	REV	
		C	TE-23067		
		SCALE: 1:2		SHEET 1 OF 1	



4

3

2

1

D



C

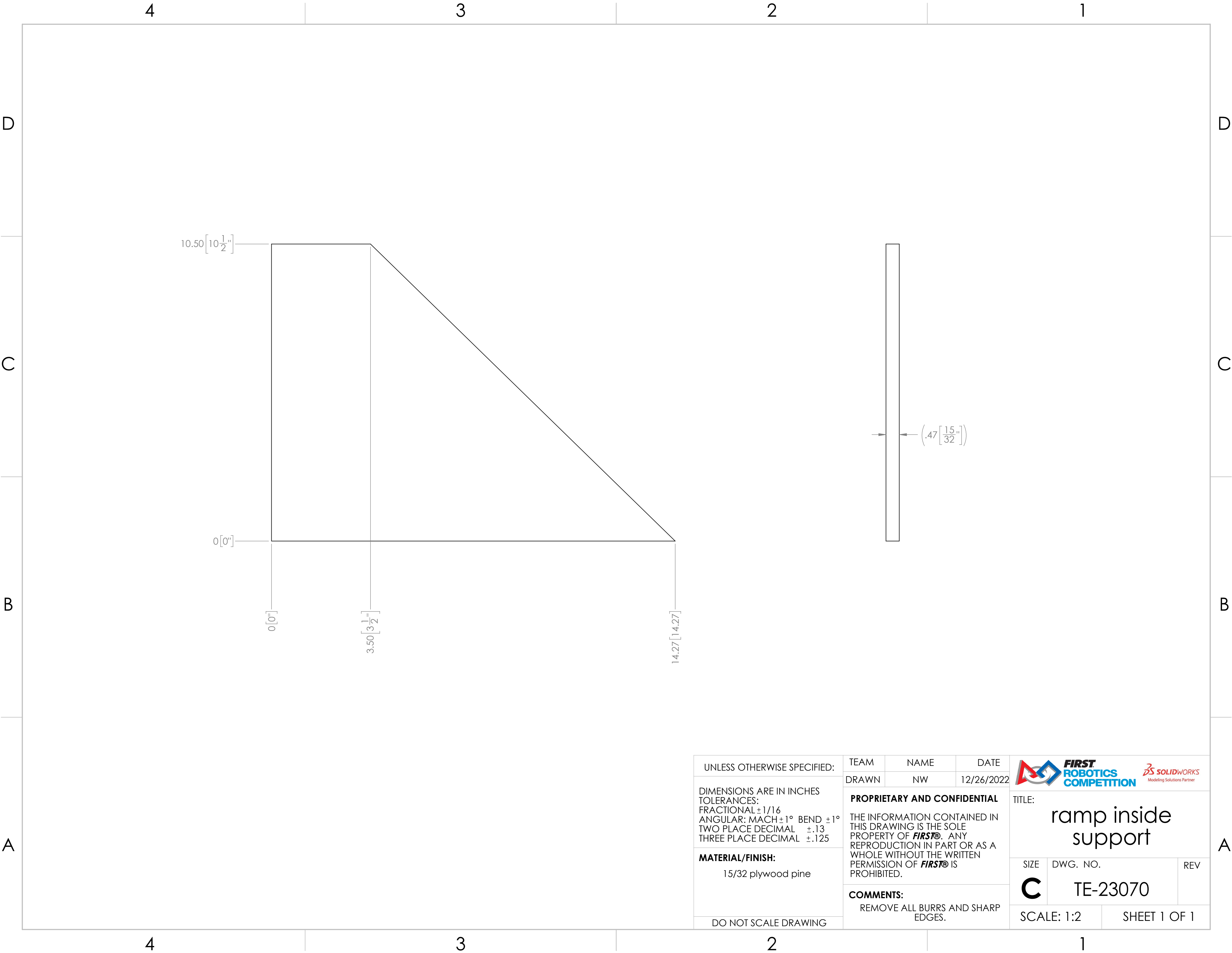
B



A

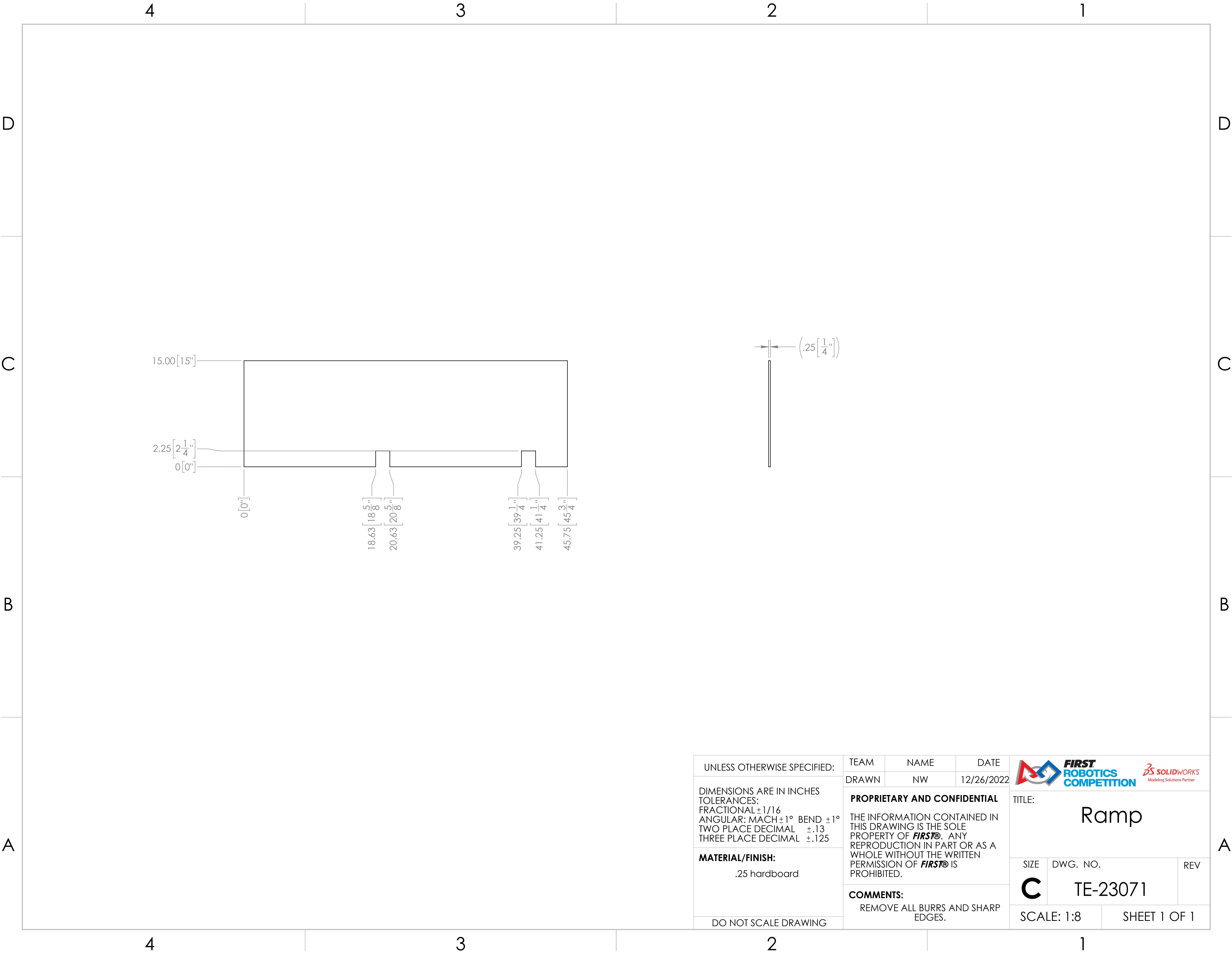
12.00[12"]



$$2.50 \left[2\frac{1}{2}'' \right]$$
 $0[0'']$
$$\text{C}=\text{O}$$
 $3.50\left[3\frac{1}{2}\right]$
$$5.81 \left[15 \frac{13}{16} \right] -$$
$$= (.47 \left[\frac{15.11}{32} \right])$$

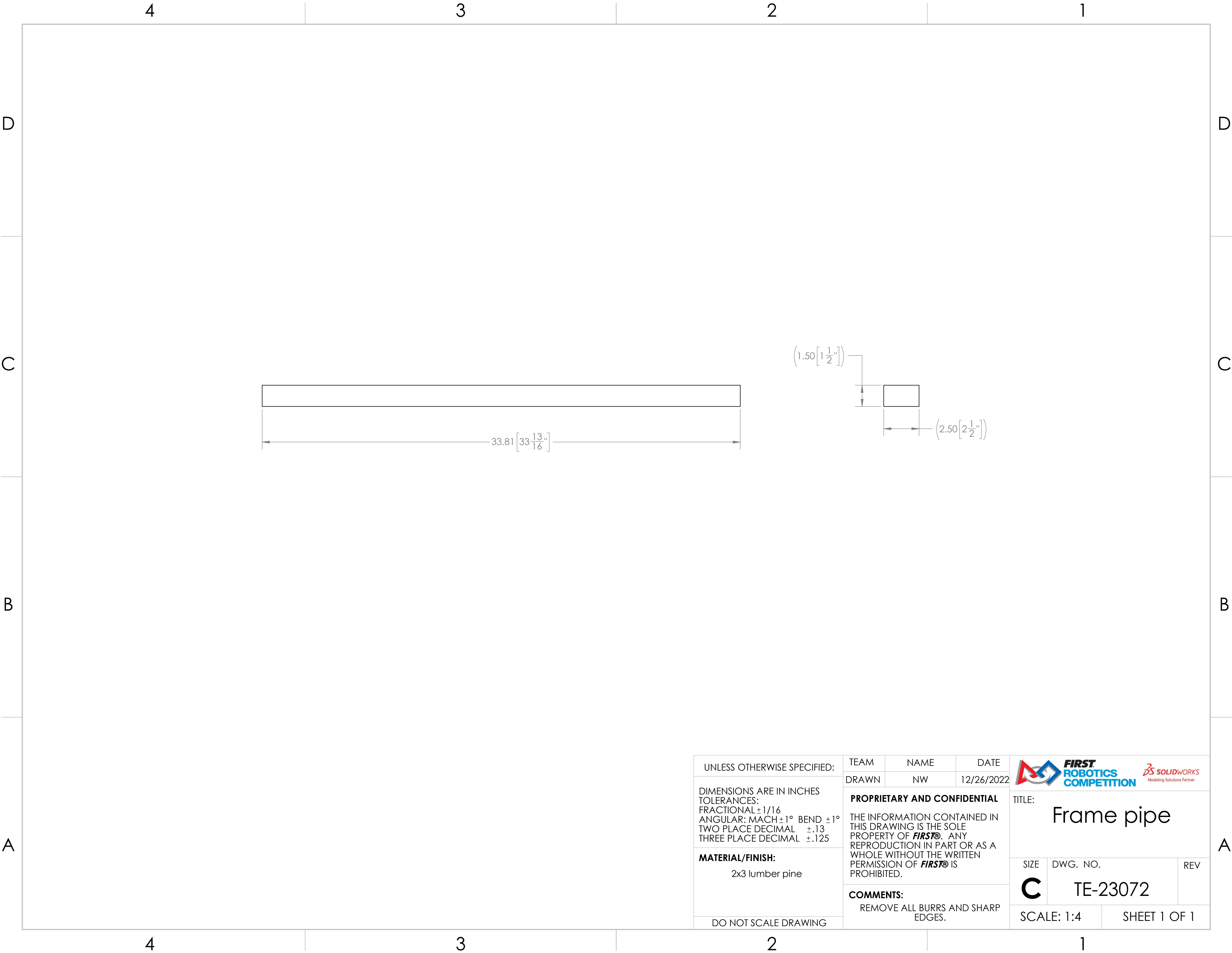
UNLESS OTHERWISE SPECIFIED:		TEAM		NAME		DATE	
DIMENSIONS ARE IN INCHES TOLERANCES: FRACTIONAL $\pm 1/16$ ANGULAR: MACH $\pm 1^\circ$ BEND $\pm 1^\circ$ TWO PLACE DECIMAL $\pm .13$ THREE PLACE DECIMAL $\pm .125$ MATERIAL/FINISH: Plywood pine 15/32 DO NOT SCALE DRAWING		DRAWN		NW		12/26/2022	
		PROPRIETARY AND CONFIDENTIAL THE INFORMATION CONTAINED IN THIS DRAWING IS THE SOLE PROPERTY OF FIRST® . ANY REPRODUCTION IN PART OR AS A WHOLE WITHOUT THE WRITTEN PERMISSION OF FIRST® IS PROHIBITED.					
		COMMENTS: REMOVE ALL BURRS AND SHARP EDGES.					
						 	
		TITLE: lower gusset					
		SIZE		DWG. NO.			REV
		C		TE-23069			
		SCALE: 1:2			SHEET 1 OF 1		





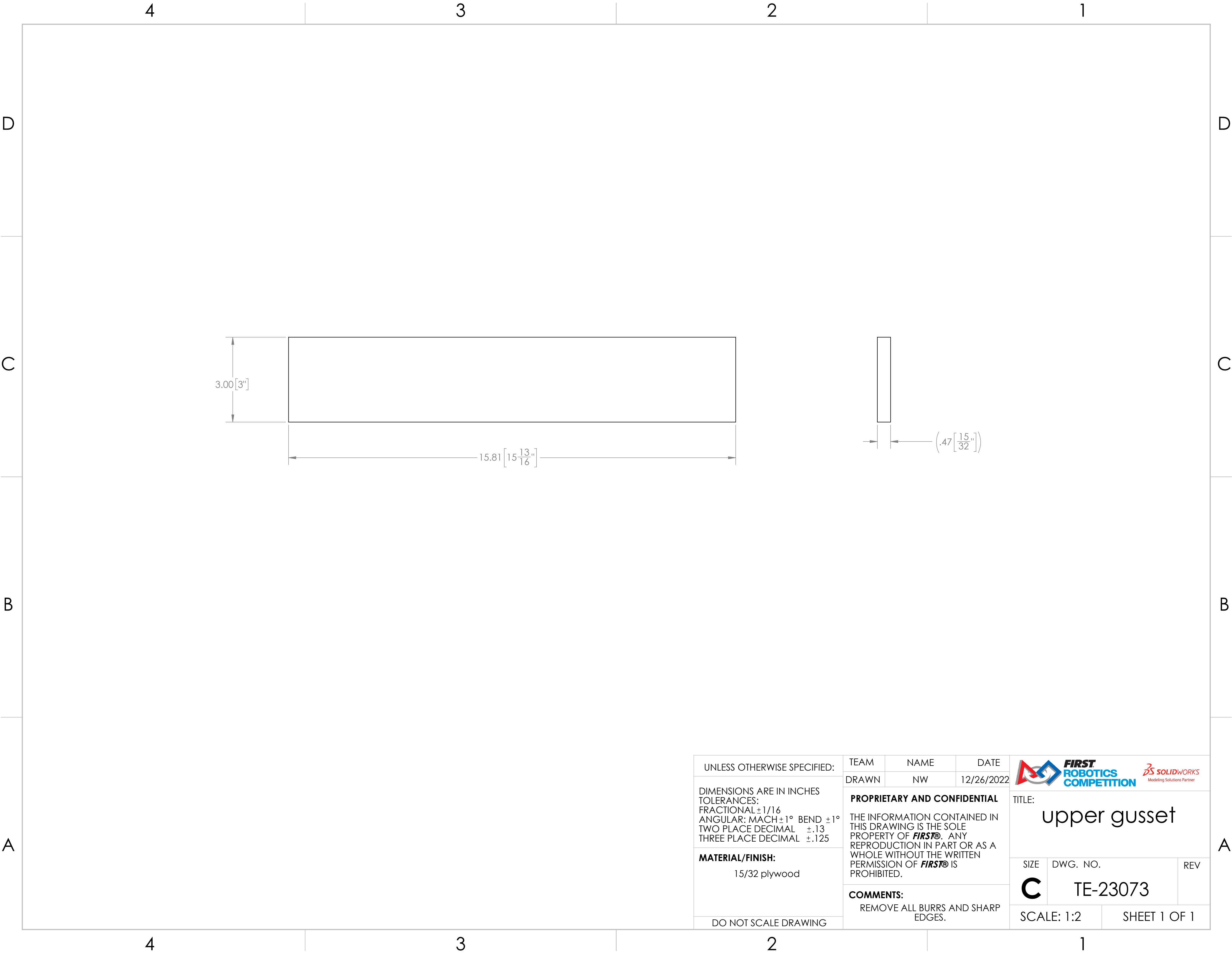
UNLESS OTHERWISE SPECIFIED: DIMENSIONS ARE IN INCHES TOLERANCES: FRACTIONAL ±1/16 ANGULAR: MACH ±1° BEND ±1° TWO PLACE DECIMAL ±.13 THREE PLACE DECIMAL ±.125 MATERIAL/FINISH: 15/32 plywood pine DO NOT SCALE DRAWING	TEAM	NAME	DATE	<div></div> <div>TITLE: ramp inside support</div>		
	DRAWN	NW	12/26/2022			
	PROPRIETARY AND CONFIDENTIAL THE INFORMATION CONTAINED IN THIS DRAWING IS THE SOLE PROPERTY OF FIRST® . ANY REPRODUCTION IN PART OR AS A WHOLE WITHOUT THE WRITTEN PERMISSION OF FIRST® IS PROHIBITED. COMMENTS: REMOVE ALL BURRS AND SHARP EDGES.					
SIZE		DWG. NO.		REV		
C		TE-23070				
SCALE: 1:2			SHEET 1 OF 1			



UNLESS OTHERWISE SPECIFIED: DIMENSIONS ARE IN INCHES TOLERANCES: FRACTIONAL ±1/16 ANGULAR: MACH ±1° BEND ±1° TWO PLACE DECIMAL ±.13 THREE PLACE DECIMAL ±.125 MATERIAL/FINISH: .25 hardboard DO NOT SCALE DRAWING	TEAM	NAME	DATE	<div></div> <div>TITLE: Ramp</div>		
	DRAWN	NW	12/26/2022			
	PROPRIETARY AND CONFIDENTIAL THE INFORMATION CONTAINED IN THIS DRAWING IS THE SOLE PROPERTY OF FIRST® . ANY REPRODUCTION IN PART OR AS A WHOLE WITHOUT THE WRITTEN PERMISSION OF FIRST® IS PROHIBITED. COMMENTS: REMOVE ALL BURRS AND SHARP EDGES.			SIZE	DWG. NO.	REV
C				TE-23071		
SCALE: 1:8				SHEET 1 OF 1		



UNLESS OTHERWISE SPECIFIED: DIMENSIONS ARE IN INCHES TOLERANCES: FRACTIONAL ±1/16 ANGULAR: MACH ±1° BEND ±1° TWO PLACE DECIMAL ±.13 THREE PLACE DECIMAL ±.125 MATERIAL/FINISH: 2x3 lumber pine DO NOT SCALE DRAWING	TEAM	NAME	DATE	<div></div> <div>TITLE: Frame pipe</div>		
	DRAWN	NW	12/26/2022			
	PROPRIETARY AND CONFIDENTIAL THE INFORMATION CONTAINED IN THIS DRAWING IS THE SOLE PROPERTY OF FIRST® . ANY REPRODUCTION IN PART OR AS A WHOLE WITHOUT THE WRITTEN PERMISSION OF FIRST® IS PROHIBITED. COMMENTS: REMOVE ALL BURRS AND SHARP EDGES.			SIZE C	DWG. NO. TE-23072	REV
SCALE: 1:4		SHEET 1 OF 1				

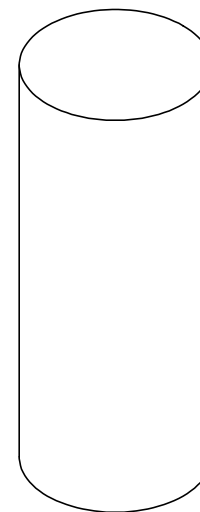
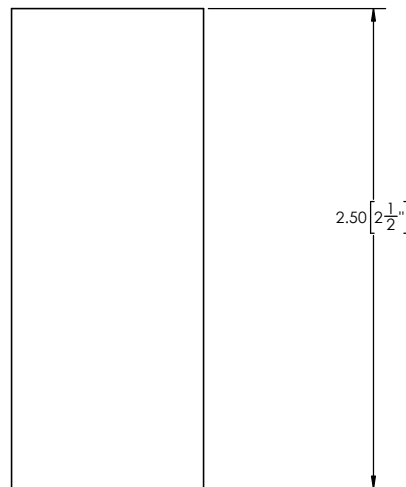
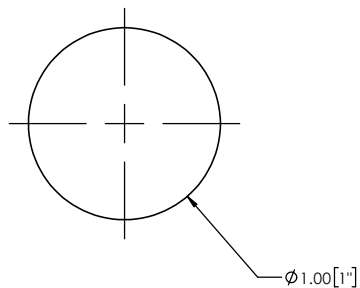




4

3

2

1



UNLESS OTHERWISE SPECIFIED:	TEAM	NAME	DATE	 		
	DRAWN	JO	12/29/2022			
DIMENSIONS ARE IN INCHES TOLERANCES: FRACTIONAL $\pm 1/16$ ANGULAR: MACH $\pm 1^\circ$ BEND $\pm 1^\circ$ TWO PLACE DECIMAL $\pm .13$ THREE PLACE DECIMAL $\pm .125$	PROPRIETARY AND CONFIDENTIAL			TITLE: Slide Handle		
	THE INFORMATION CONTAINED IN THIS DRAWING IS THE SOLE PROPERTY OF FIRST ®. ANY REPRODUCTION IN PART OR AS A WHOLE WITHOUT THE WRITTEN PERMISSION OF FIRST ® IS PROHIBITED.					
MATERIAL/FINISH:	COMMENTS: REMOVE ALL BURRS AND SHARP EDGES.			SIZE	DWG. NO.	REV
1" Wood Dowel				C	TE-23074	
DO NOT SCALE DRAWING				SCALE: 2:1		SHEET 1 OF 1

4

3

2

1

D

D

C

C

B

B

A

A