

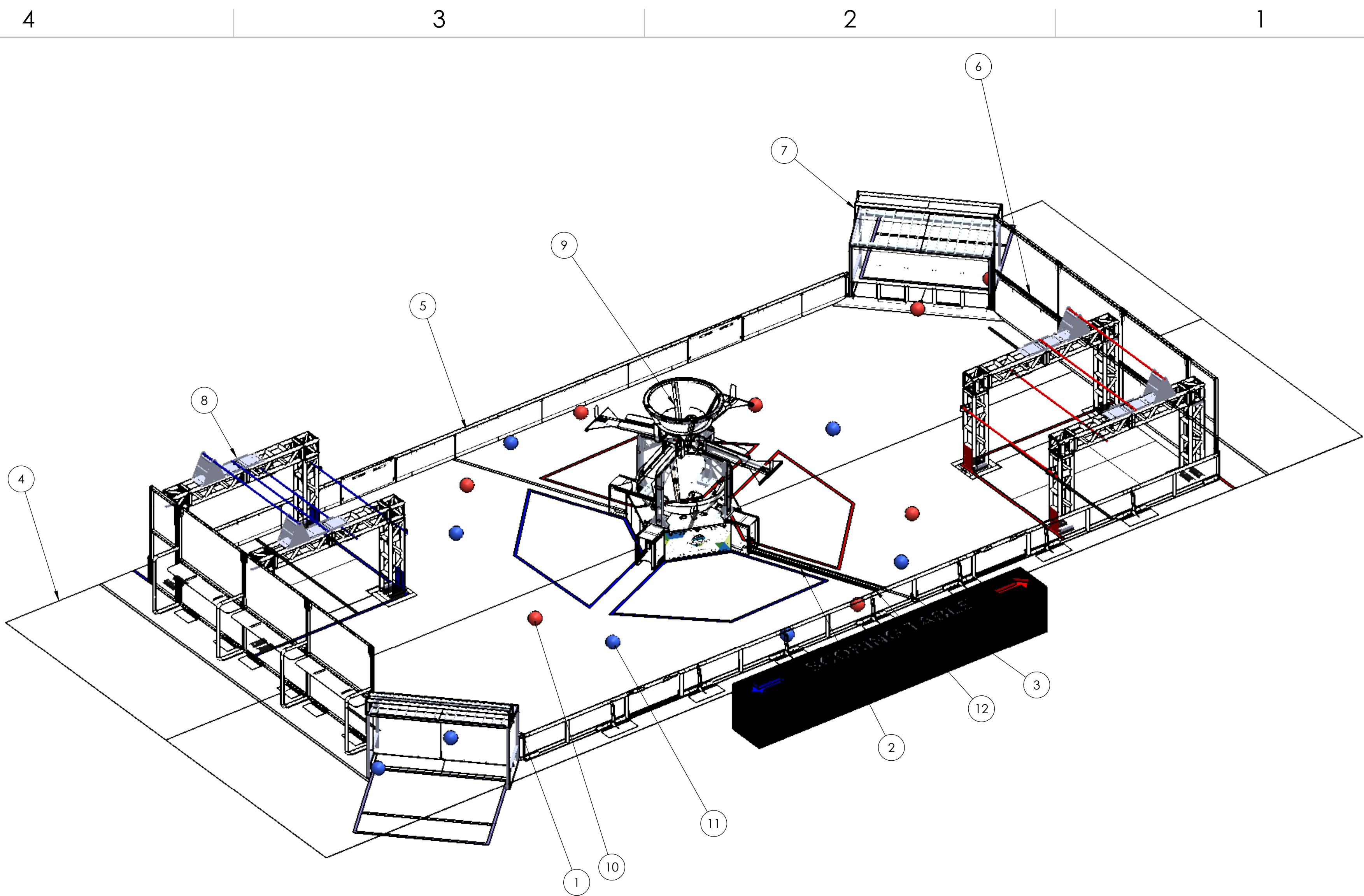


UNLESS OTHERWISE SPECIFIED:		FIELD	NAME	DATE
DIMENSIONS ARE IN INCHES TOLERANCES: FRACTIONAL $\pm 1/2$ ANGULAR: MACH $\pm 1^\circ$ BEND $\pm 1^\circ$ TWO PLACE DECIMAL $\pm .50$		DRAWN	DF	12/16/2021
MATERIAL/FINISH:		<b>PROPRIETARY AND CONFIDENTIAL</b> THE INFORMATION CONTAINED IN THIS DRAWING IS THE SOLE PROPERTY OF <b>FIRST®</b> . ANY REPRODUCTION IN PART OR AS A WHOLE WITHOUT THE WRITTEN PERMISSION OF <b>FIRST®</b> IS PROHIBITED.		
DO NOT SCALE DRAWING		<b>COMMENTS:</b> REMOVE ALL BURRS AND SHARP EDGES.		
		 		
		TITLE: 2022 Field Layout and Marking		
		SIZE	DWG. NO.	REV
		<b>C</b>	FE-2022	
		SCALE: 1:64		SHEET 1 OF 5



Notes:  
1. Bill of Materials and model do not represent all CARGO to be staged and used in a match.

ITEM NO.	PART NUMBER	DESCRIPTION	QTY.
1	FE-00003	Rail Pin Assy	4
2	FE-00300	HDPE Cable Protector	2
3	FE-00305	Cable protector exit segment with hook	1
4	FE-2022-01	Carpet	2
5	FE-2022-02	Side Border	2
6	FE-2022-03	End Wall	2
7	GE-22000	Terminal Assembly	2
8	GE-22100	Hangar	2
9	GE-22300	Hub	1
10	GE-22497	Cargo - Red	8
11	GE-22498	Cargo - Blue	8
12	GE-22600	Angled cable protector	1

UNLESS OTHERWISE SPECIFIED:  
  
DIMENSIONS ARE IN INCHES  
TOLERANCES:  
FRACTIONAL  $\pm 1/2$   
ANGULAR: MACH  $\pm 1^\circ$  BEND  $\pm 1^\circ$   
TWO PLACE DECIMAL  $\pm .50$

MATERIAL/FINISH:

DO NOT SCALE DRAWING

FIELD	NAME	DATE
DRAWN	DF	12/16/2021

PROPRIETARY AND CONFIDENTIAL

THE INFORMATION CONTAINED IN THIS DRAWING IS THE SOLE PROPERTY OF **FIRST®**. ANY REPRODUCTION IN PART OR AS A WHOLE WITHOUT THE WRITTEN PERMISSION OF **FIRST®** IS PROHIBITED.

COMMENTS:  
REMOVE ALL BURRS AND SHARP EDGES.



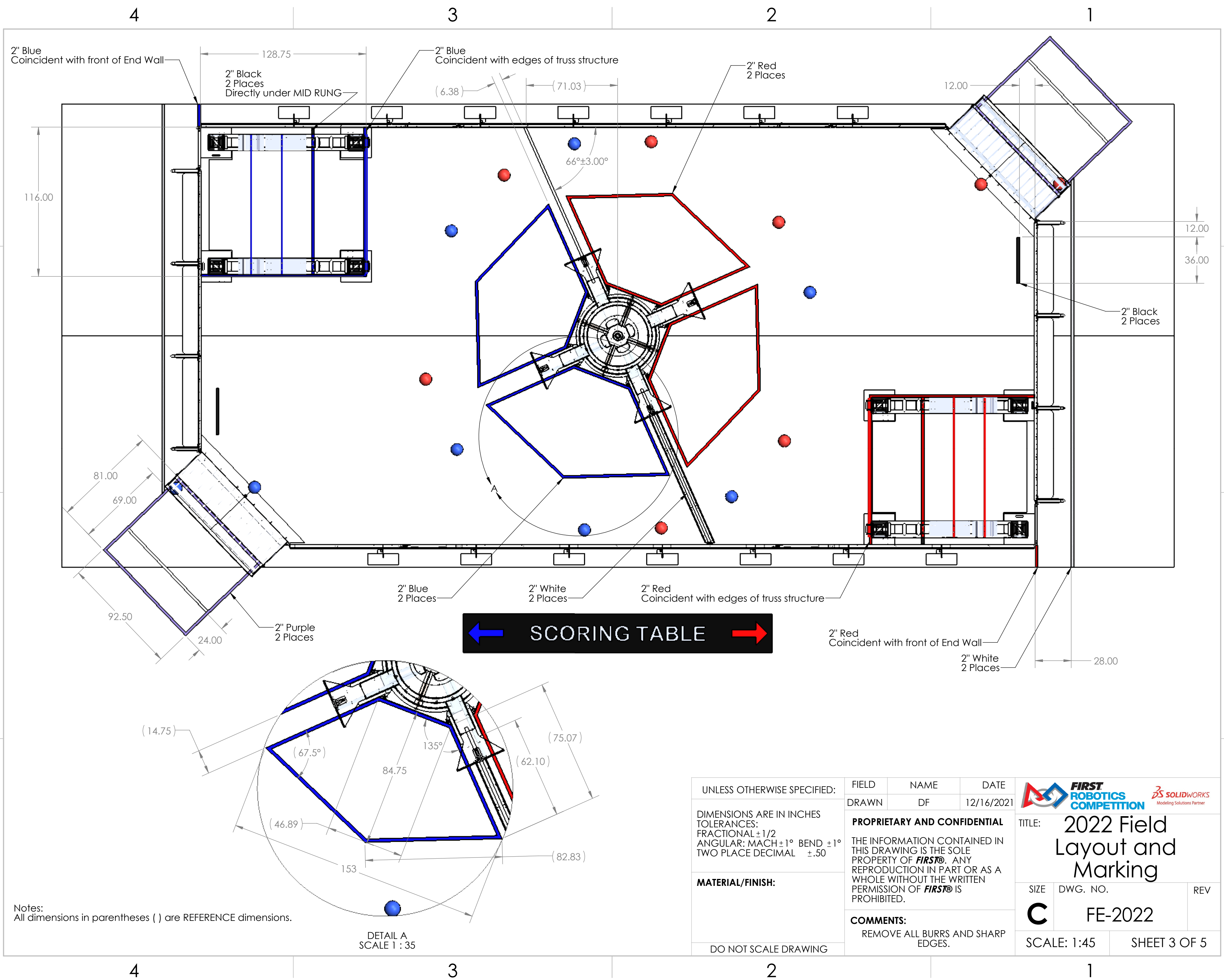
TITLE: 2022 Field Layout and Marking

SIZE DWG. NO. REV

C FE-2022

SCALE: 1:50 SHEET 2 OF 5





D

C

B

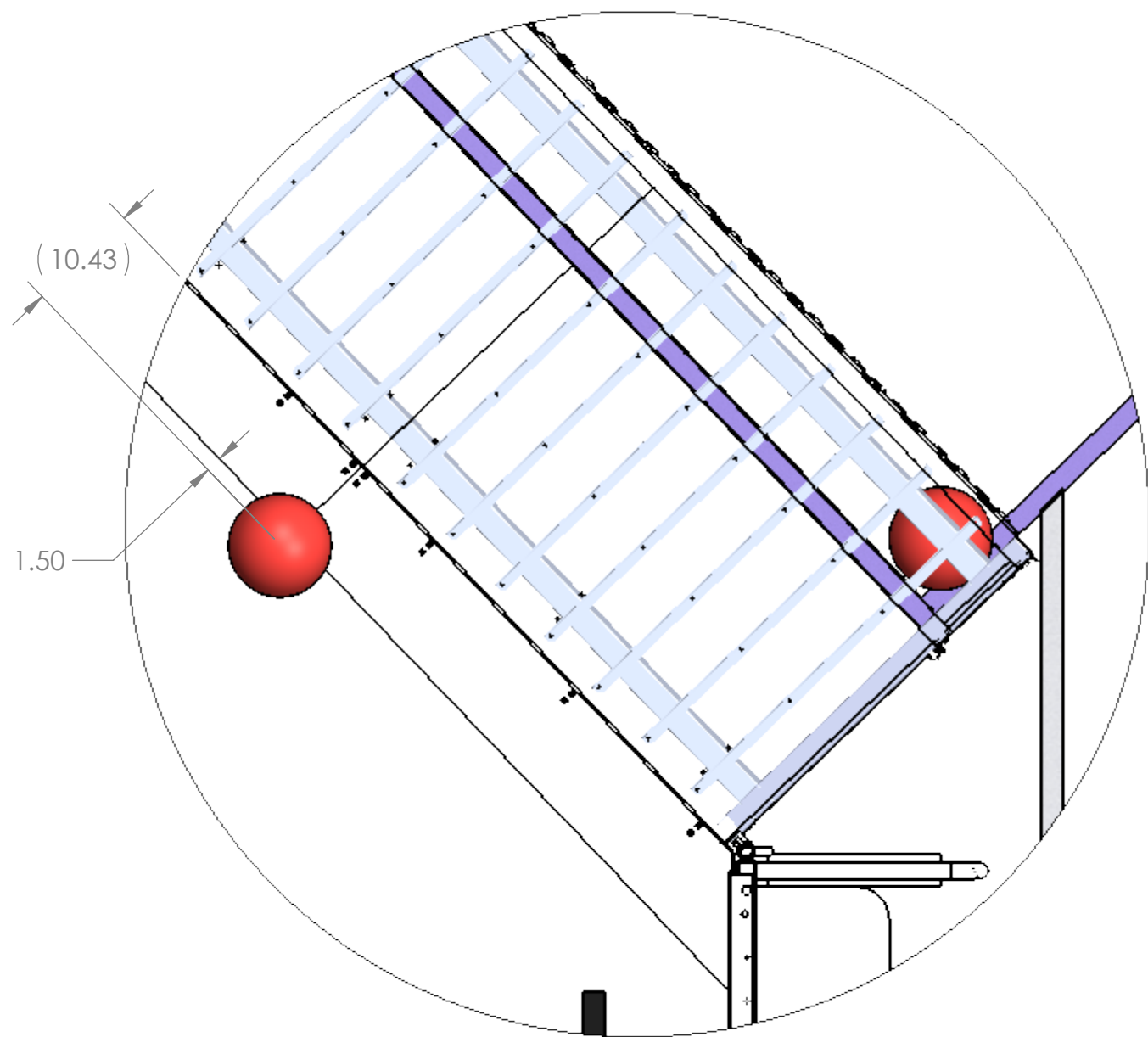
A

D

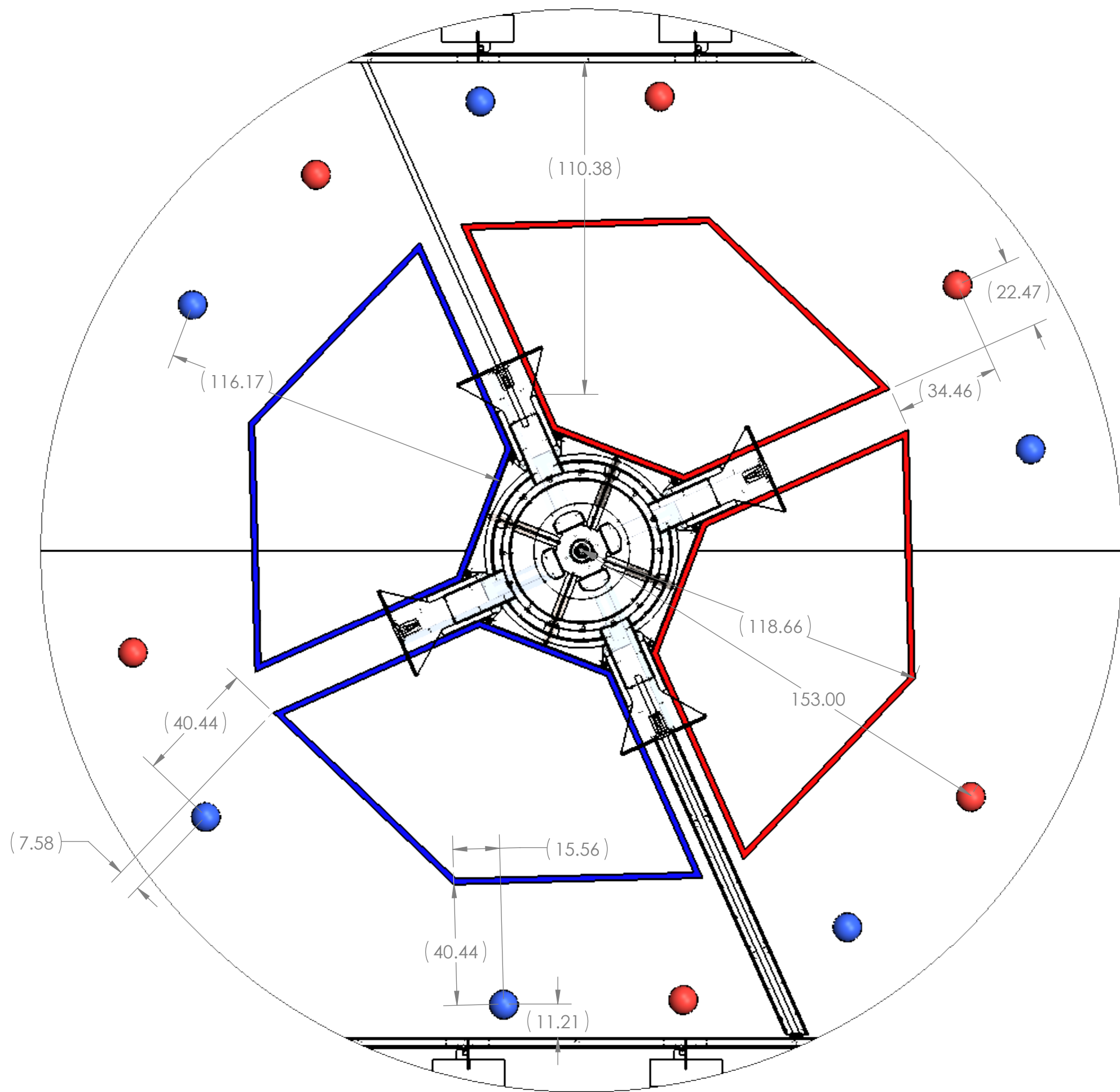
C

B

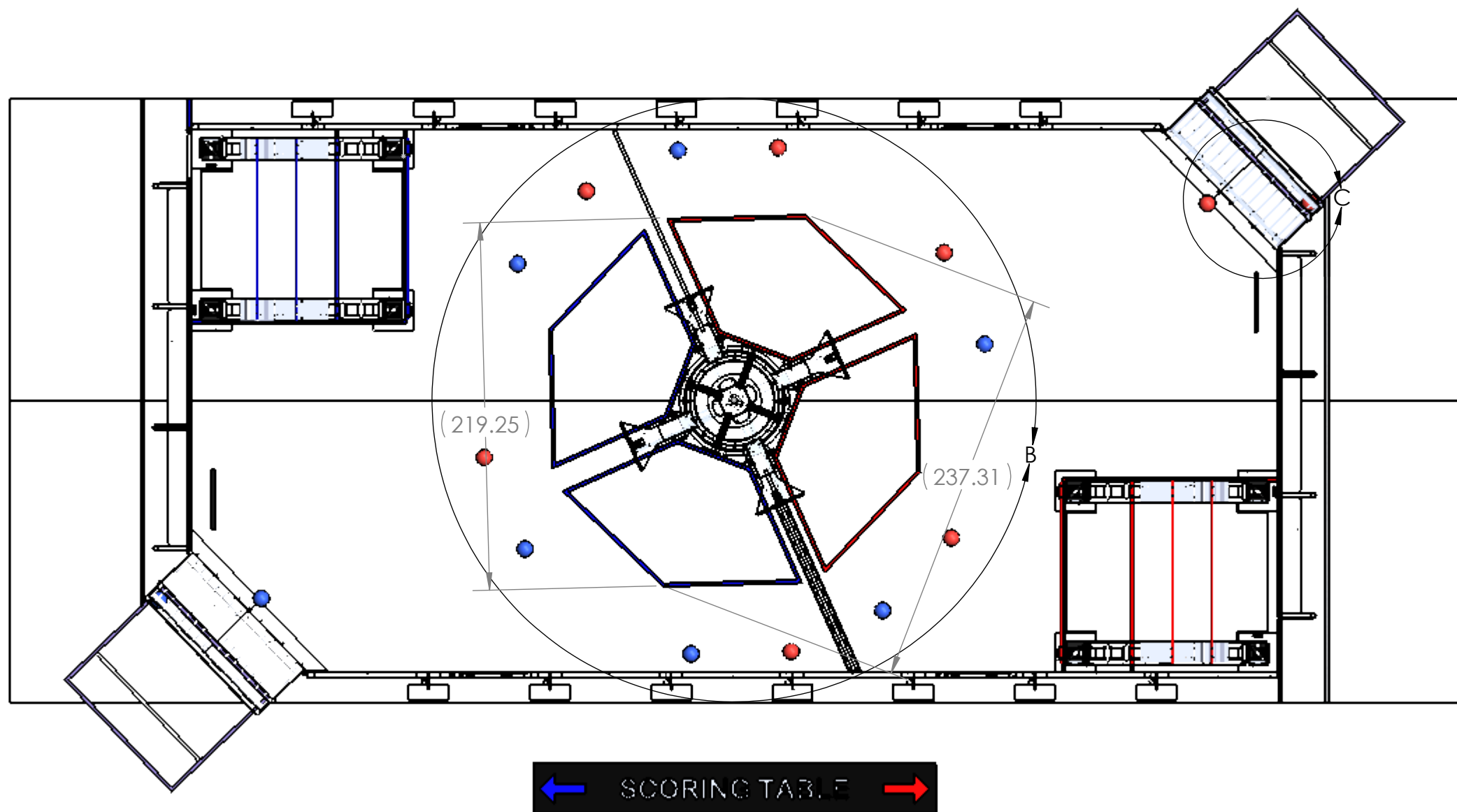
A



DETAIL C  
SCALE 1 : 15





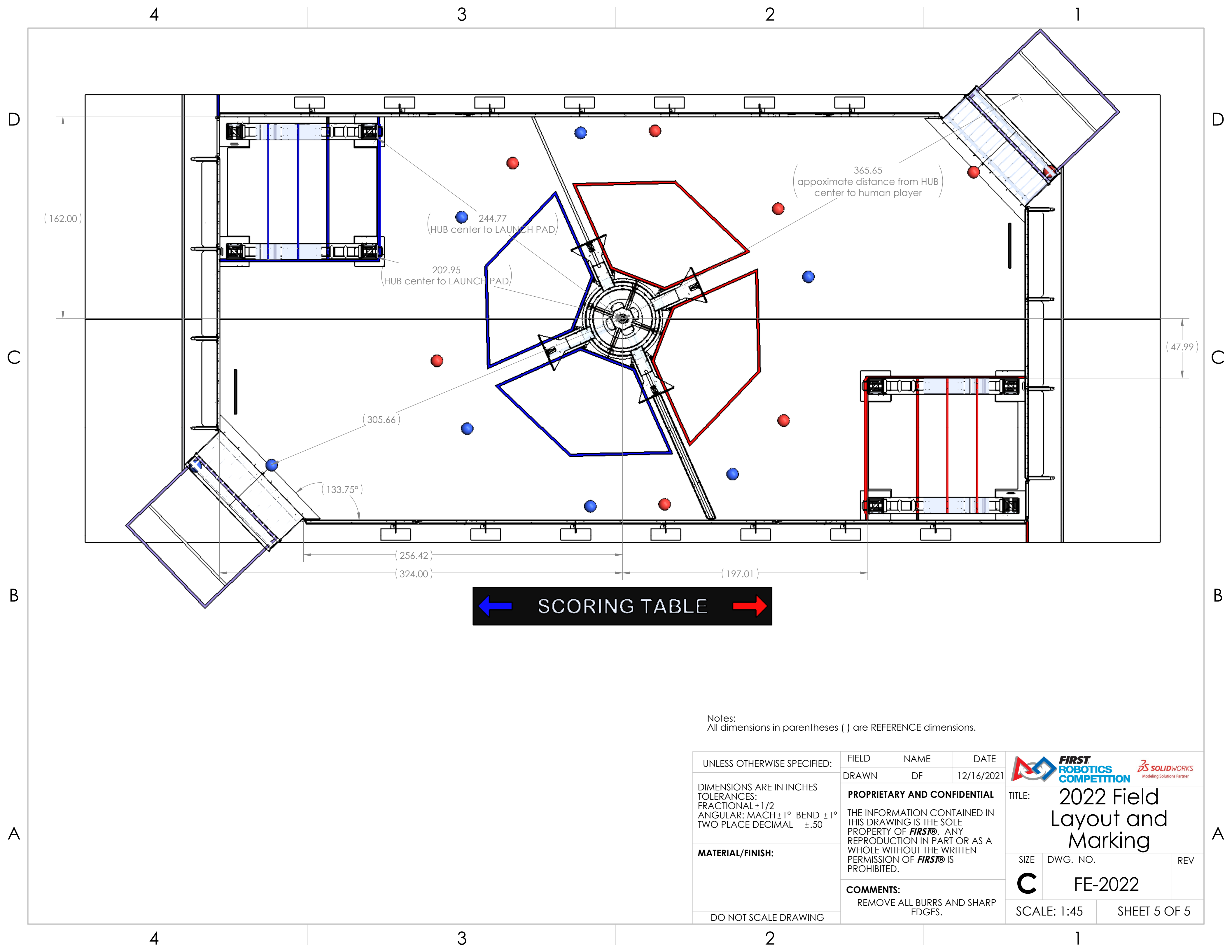
DETAIL B  
SCALE 1 : 36




← SCORING TABLE →

Notes:  
All dimensions in parentheses ( ) are REFERENCE dimensions.

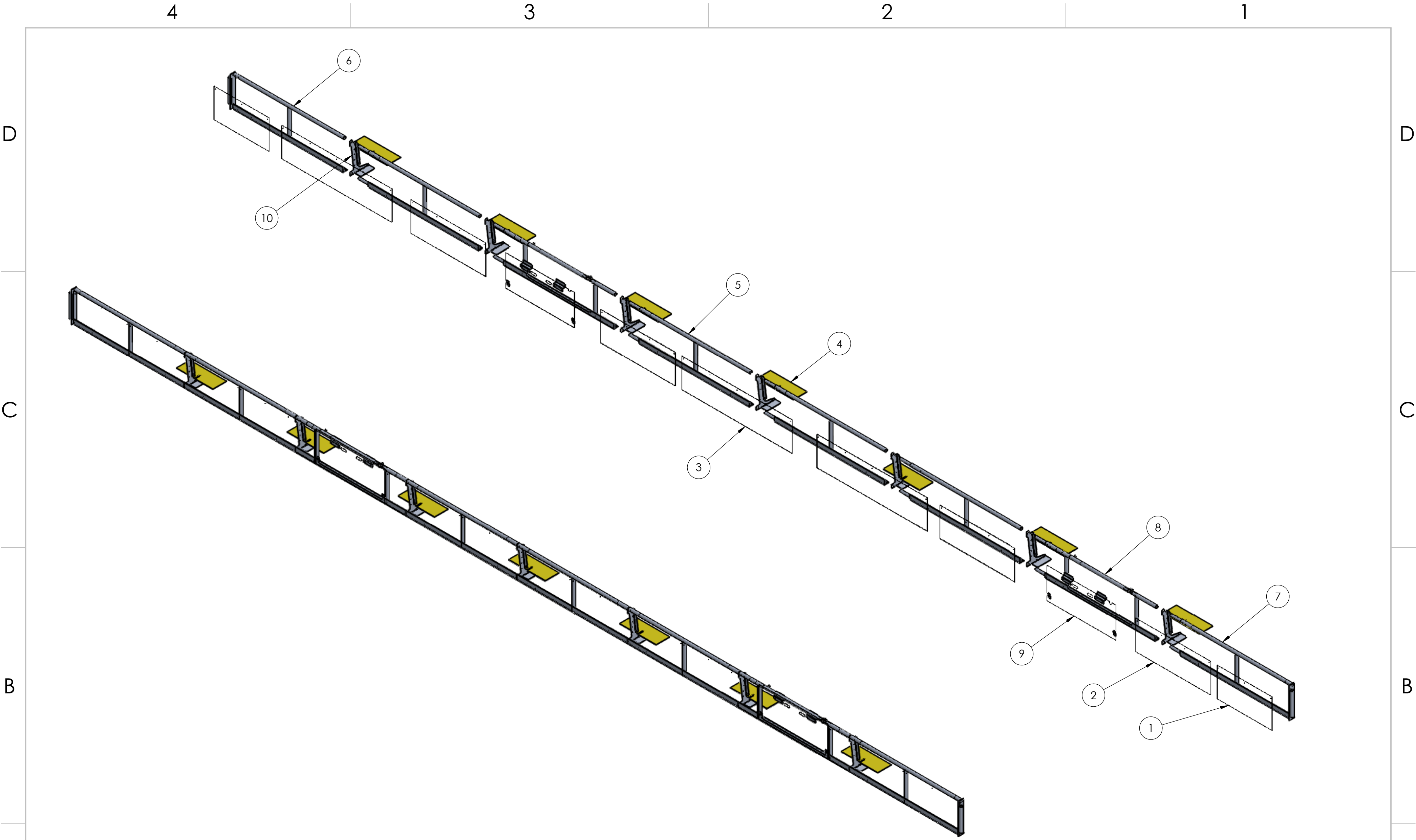
UNLESS OTHERWISE SPECIFIED:	FIELD	NAME	DATE	<div><div><b>FIRST</b> ROBOTICS COMPETITION</div><div><div><b>SOLIDWORKS</b> Modeling Solutions Partner</div></div></div>		
DIMENSIONS ARE IN INCHES TOLERANCES: FRACTIONAL ± 1/2 ANGULAR: MACH ± 1° BEND ± 1° TWO PLACE DECIMAL ±.50	DRAWN	DF	12/16/2021	TITLE: 2022 Field Layout and Marking		
	PROPRIETARY AND CONFIDENTIAL			SIZE	DWG. NO.	REV
	THE INFORMATION CONTAINED IN THIS DRAWING IS THE SOLE PROPERTY OF <b>FIRST®</b> . ANY REPRODUCTION IN PART OR AS A WHOLE WITHOUT THE WRITTEN PERMISSION OF <b>FIRST®</b> IS PROHIBITED.			C	FE-2022	
MATERIAL/FINISH:	COMMENTS: REMOVE ALL BURRS AND SHARP EDGES.					
DO NOT SCALE DRAWING				SHEET 4 OF 5		



Notes:  
All dimensions in parentheses ( ) are REFERENCE dimensions.

UNLESS OTHERWISE SPECIFIED:  DIMENSIONS ARE IN INCHES TOLERANCES: FRACTIONAL $\pm 1/2$ ANGULAR: MACH $\pm 1^\circ$ BEND $\pm 1^\circ$ TWO PLACE DECIMAL $\pm .50$  MATERIAL/FINISH:   DO NOT SCALE DRAWING	FIELD	NAME	DATE	 TITLE: 2022 Field Layout and Marking	
	DRAWN	DF	12/16/2021		
	PROPRIETARY AND CONFIDENTIAL			SIZE	DWG. NO.
	THE INFORMATION CONTAINED IN THIS DRAWING IS THE SOLE PROPERTY OF FIRST®. ANY REPRODUCTION IN PART OR AS A WHOLE WITHOUT THE WRITTEN PERMISSION OF FIRST® IS PROHIBITED.			C	FE-2022
COMMENTS: REMOVE ALL BURRS AND SHARP EDGES.			SCALE: 1:45		
			SHEET 5 OF 5		





ITEM NO.	PART NUMBER	DESCRIPTION	QTY.
1	FE-00008	Field Plastic "A"	2
2	FE-00009	Field Plastic "B"	4
3	FE-00010	Field Plastic "C"	3
4	FE-00015	Trip Guard	7
5	FE-00022	Field Rail Assy - Mid	4
6	FE-00023	Field Rail Assy - Left	1
7	FE-00024	Field Rail Assy - Right	1
8	FE-00029	Field Gate, Assembly	2
9	FE-00047	Gate Plastic Assembly	2
10	FE-00050	Outrigger	7

UNLESS OTHERWISE SPECIFIED:  
  
DIMENSIONS ARE IN INCHES  
TOLERANCES:  
FRACTIONAL  $\pm 1/2$   
ANGULAR: MACH  $\pm 1^\circ$  BEND  $\pm 1^\circ$   
TWO PLACE DECIMAL  $\pm .50$

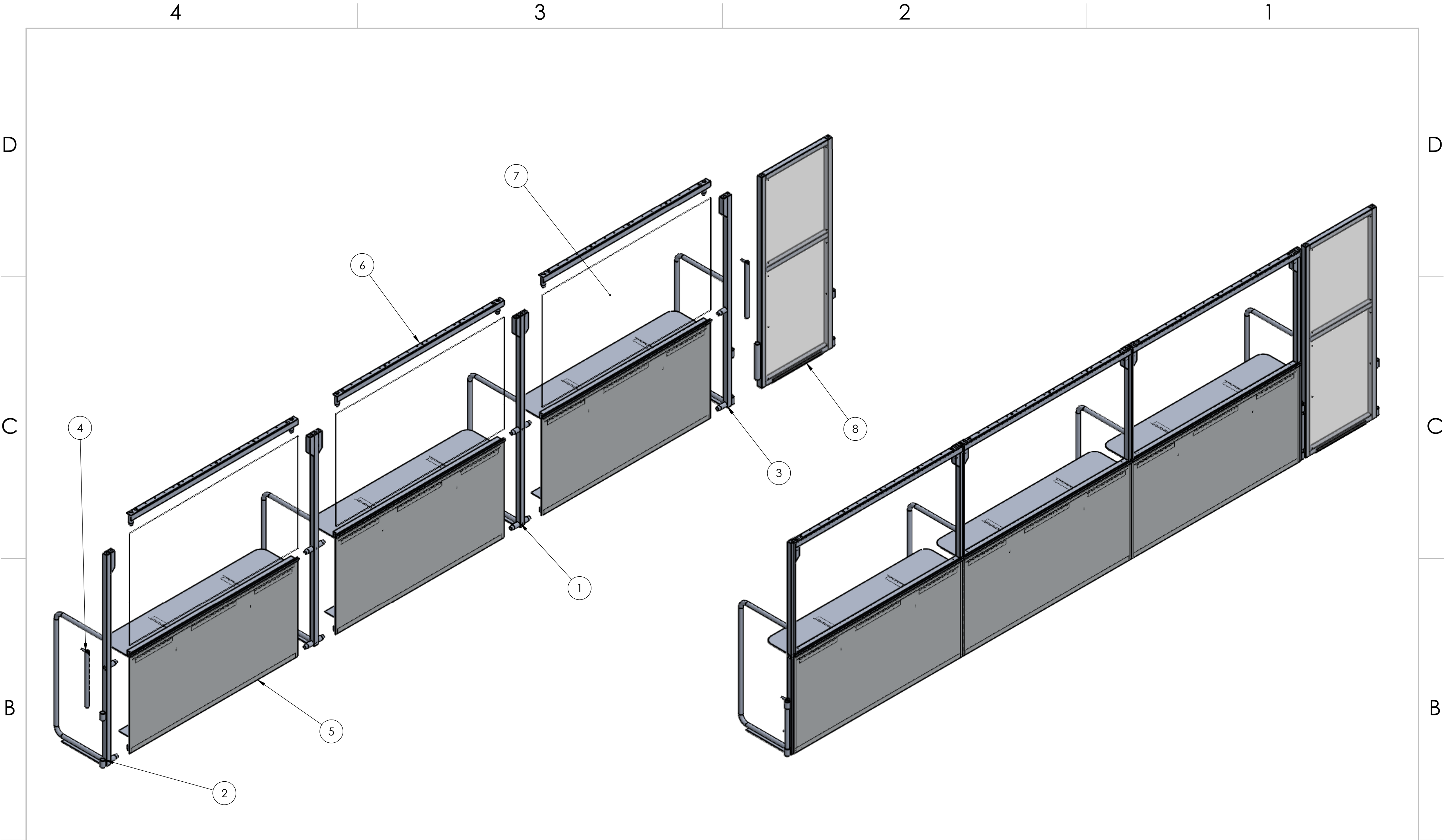
MATERIAL/FINISH:

DO NOT SCALE DRAWING

FIELD	NAME	DATE
DRAWN	CO	12/30/2021
<b>PROPRIETARY AND CONFIDENTIAL</b>  THE INFORMATION CONTAINED IN THIS DRAWING IS THE SOLE PROPERTY OF <b>FIRST®</b> . ANY REPRODUCTION IN PART OR AS A WHOLE WITHOUT THE WRITTEN PERMISSION OF <b>FIRST®</b> IS PROHIBITED.		
<b>COMMENTS:</b> REMOVE ALL BURRS AND SHARP EDGES.		



TITLE: <b>Side Border</b>		
SIZE <b>C</b>	DWG. NO. <b>FE-2022-02</b>	REV
SCALE: 1:30		SHEET 1 OF 1



ITEM NO.	PART NUMBER	DESCRIPTION	QTY.
1	FE-00001	Drivers Station Support	2
2	FE-00002_Right	Corner Supports, Right	1
3	FE-00002	Corner Supports, Left	1
4	FE-00003	Rail Pin Assy	2
5	FE-00004	End Panel	3
6	FE-00007	Field Top Rail	3
7	FE-00012	Drivers Station Acrylic	3
8	GE-22202	Alliance Station Panel	1

UNLESS OTHERWISE SPECIFIED:

DIMENSIONS ARE IN INCHES  
TOLERANCES:  
FRACTIONAL  $\pm 1/2$   
ANGULAR: MACH  $\pm 1^\circ$  BEND  $\pm 1^\circ$   
TWO PLACE DECIMAL  $\pm .50$

MATERIAL/FINISH:

DO NOT SCALE DRAWING

FIELD

NAME

DATE

DRAWN

CO

12/30/2021

PROPRIETARY AND CONFIDENTIAL

THE INFORMATION CONTAINED IN  
THIS DRAWING IS THE SOLE  
PROPERTY OF **FIRST®**. ANY  
REPRODUCTION IN PART OR AS A  
WHOLE WITHOUT THE WRITTEN  
PERMISSION OF **FIRST®** IS  
PROHIBITED.

COMMENTS:

REMOVE ALL BURRS AND SHARP  
EDGES.



**FIRST**  
ROBOTICS  
COMPETITION



Modeling Solutions Partner

TITLE:

End Wall

SIZE

DWG. NO.

REV

C

FE-2022-03

SCALE: 1:20

SHEET 1 OF 1